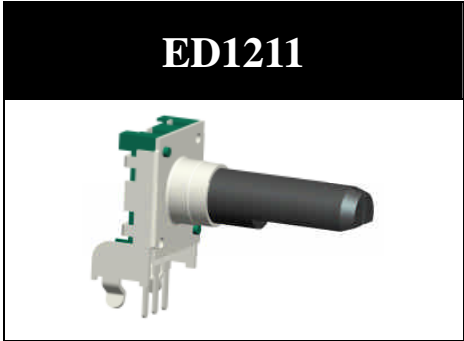




12mm Rotary type Encoders

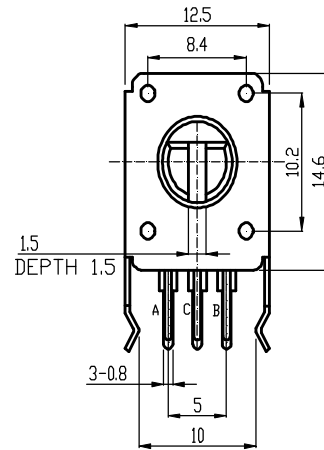
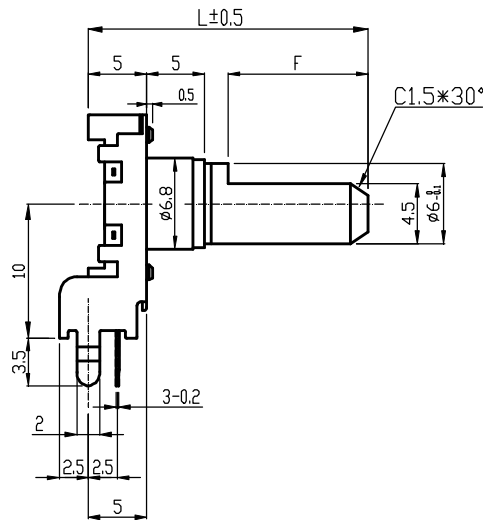


Part Number

ED1211 - 24 - 24 LC - 25 F

↓ Pulses
 ↓ Clicks
 ↓ Torque
 ↓ Shaft length
 ↓ Shaft typ

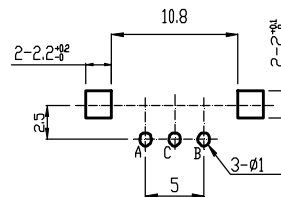
Dimensions



CIRCUIT



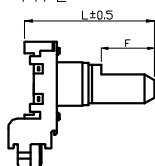
P.C.B MOUNTING HOLE DETAIL



Available Clicks	0 clicks		12 clicks	24 clicks
Available Pulses	12 pulses	24 pulses	12 pulses	24 pulses

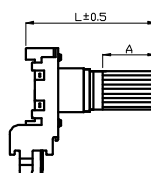
Shaft Type

F-TYPE



L	17.5	20	25	30
F	5	7	12	12

KC-TYPE

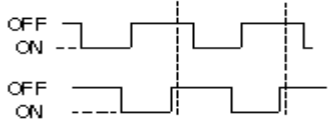


L	17.5	20	25	30
A	5	7	12	12



12mm Rotary type Encoders

1. Electrical Characteristics

Power Rating	DC 5V 0.5mA
Insulation Resistance	More than 10 M Ω at DC 50V 1 Minute
Withstand Voltage	1 Minute at AC 50V
Sliding Noise	3mS(Test conditions:360° /S) Using the C/R filter circuit is Recommended
Resolution	• 12 • 24 Pulses/360° for each phase
Phase Difference	$\Delta T=0.25\pm 0.17T$
Output Signal and Rotational Direction	C.W direction A Signal B Signal 
Working Temperature	-10 °C ~ 70 °C
Storage Temperature	-40 °C ~ 85°C

2. Mechanical Characteristics

Total Rotational Angle	360 °
Rotational Torque	• LC30~ 90gf.cm , • LLC 10~ 50gf.cm , • HC 90~ 150gf.cm ※(Shaft Rotatable at-10 °C ~ 5 °C)
Shaft Push-Pull Strength	• With switch 5.1 Kgf. • Without switch 10 Kgf.
Number and Position Detent	• 12 detents (Step angle:30°±3°) • 24 detents (Step angle:15°±3°) • 0 detents (Step angle:360°)
Rotational Life	30,000 Cycles Min. at a speed of 600cycles/H
Resistance To soldering Heat	Manual Soldering: Less than 300°C and quicker than 3 seconds