



SONG HUEI ELECTRIC CO.,LTD

24mm Wire Wound Potentiometer

PW24



Part Number

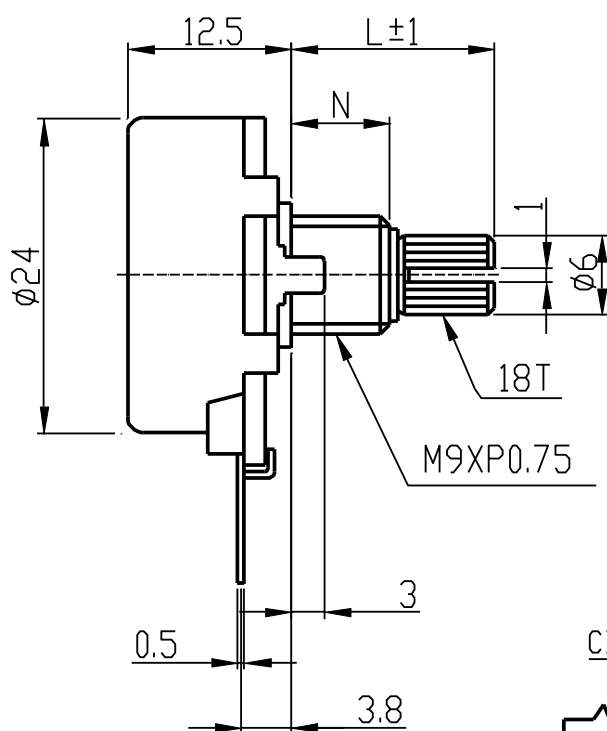
PW24 – 8Ω, L- 15 KC

Resistance value

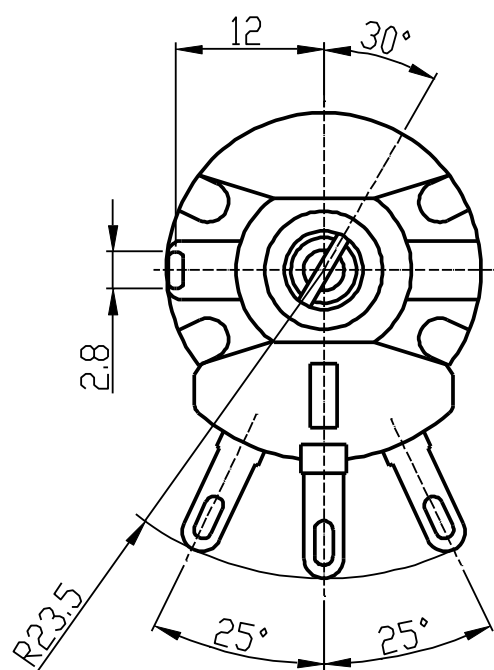
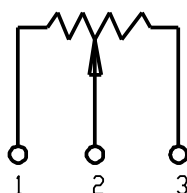
Shaft Length

Shaft Type

Dimensions



CIRCUIT



N=	7.5	10.5
L=	15	20

**24mm Wire Wound Potentiometer****General**

Operating temperature	-10℃ ~ +70℃
Manual soldering	300℃ Max 3sec

Electrical Characteristics

Total resistance	5Ω ~ 2K	
Resistance tolerance	± 20 %	
Resistance taper	B Type	
Rated power(W)	5 W	
Insulation resistance	Over 100 MΩ with DC 500 V put between the terminal and the shaft.	
Residual resistance	4 ~ 50 Ω Less than 0.5 Ω	101 ~ 500 Ω Less than 2 Ω
	51 ~ 100 Ω Less than 1 Ω	1K ~ 5K Ω Less than 2% Ω
Withstand voltage	1 Minute against 50HZ 500V put between the terminal and the shaft.	

Mechanical Characteristics

Total rotational angle	300 °± 5 °
Rotational torque	50 ~ 300 gf.cm
Nut fastening strength	10 ~ 12 Kgf.cm
Shaft push-pull strength	1 Kgf.cm
Rotational life	15,000 Cycles