



10mm Ultra Thin Micro Rotary Potentiometers

R10NA

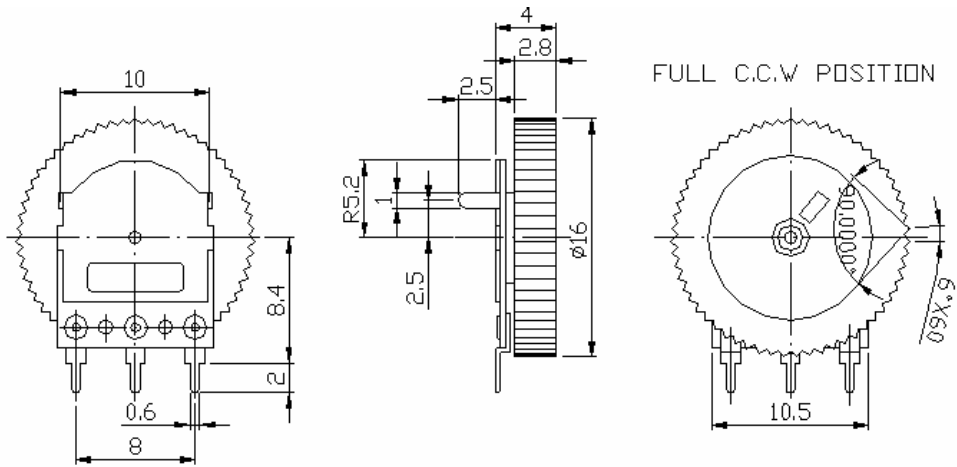


Part Number

R10NA-B **50K** / **φ16** x **2.8**

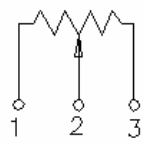
↓ Taper ↓ Resistance value ↓ Knob Thickness T
 Knob Diameter (D)

Dimensions

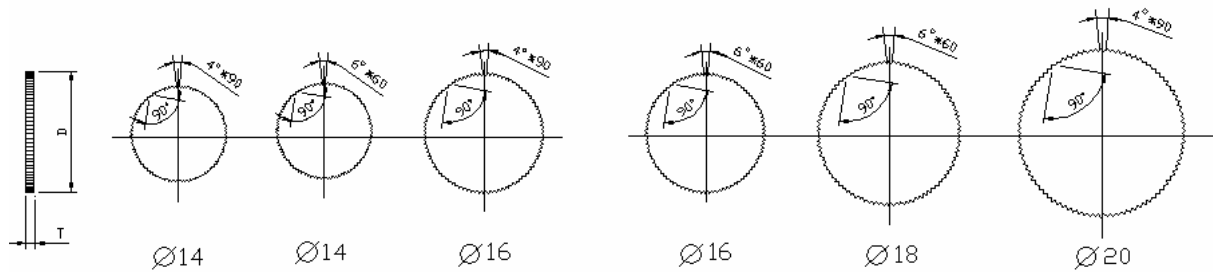


FULL C.C.W POSITION

CIRCUIT



Shaft Types

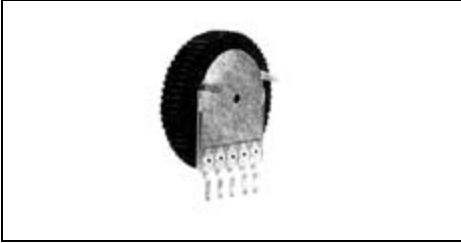


(Unit:mm)

D	$\phi 14$	$\phi 14$	$\phi 14$	$\phi 16$	$\phi 16$	$\phi 16$	$\phi 17$	$\phi 18$	$\phi 18$	$\phi 18$	$\phi 20$
T	1.0	2.0	2.8	1.0	2.0	2.8	2.8	1.0	2.0	2.8	2.8

10mm Ultra Thin Micro Rotary Potentiometers

R10GA

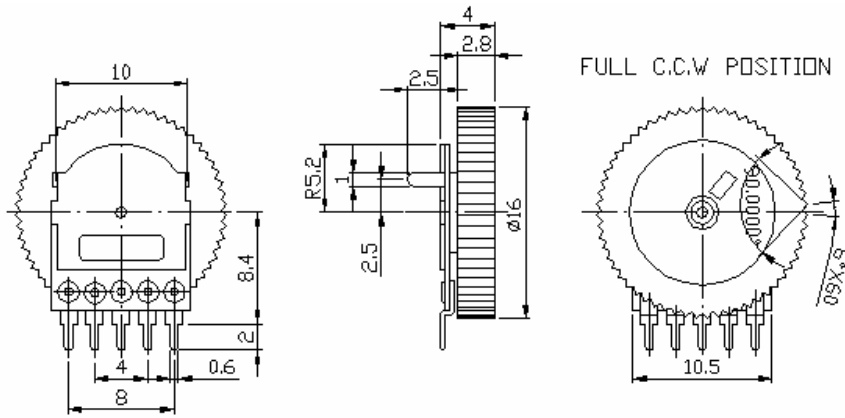


Part Number

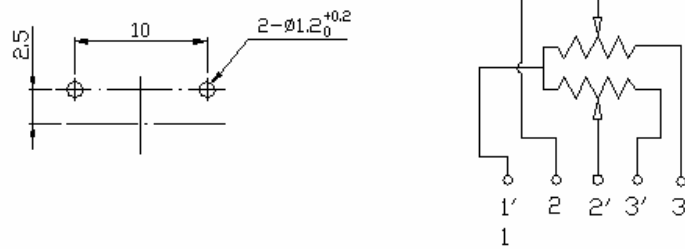
R10GA- **B** **50K** / **φ16** x **2.8**

Taper Resistance value Knob Thickness T
Knob Diameter (D)

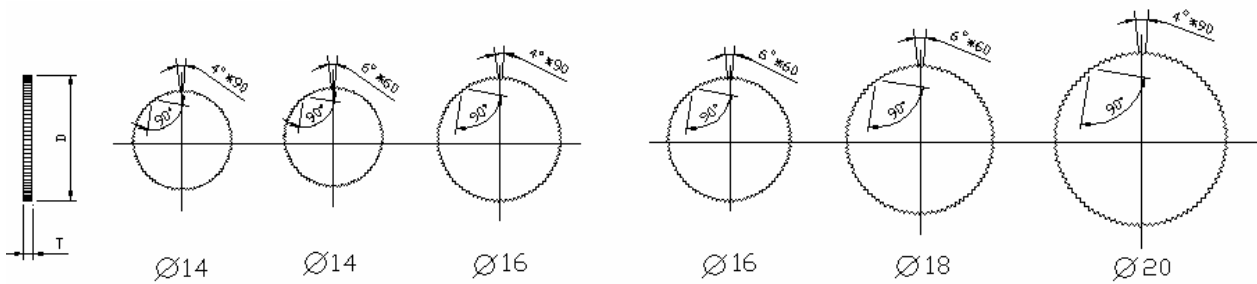
Dimensions



CIRCUIT



Shaft Types



(Unit:mm)

D	Ø14	Ø14	Ø14	Ø16	Ø16	Ø16	Ø17	Ø18	Ø18	Ø18	Ø20
T	1.0	2.0	2.8	1.0	2.0	2.8	2.8	1.0	2.0	2.8	2.8

10mm Ultra Thin Micro Rotary Potentiometers

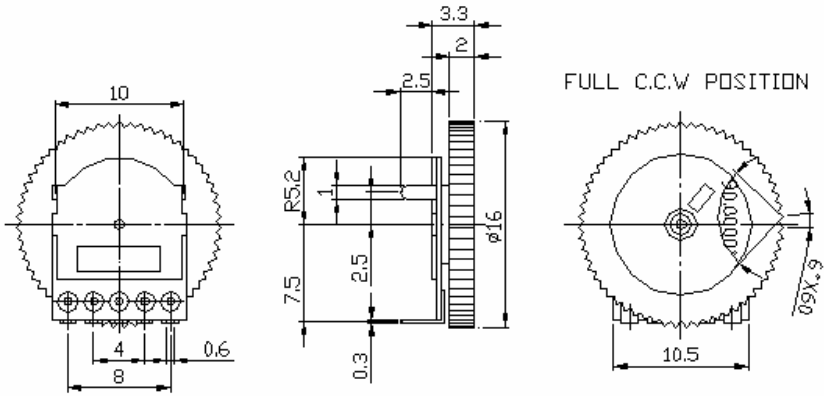
R10GB



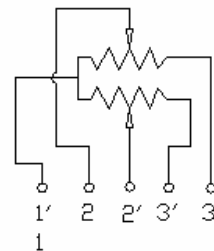
Part Number

R10GB- B 50K / $\phi 16$ x 2.8
 Taper Resistance value Knob Thickness T
 Knob Diameter (D)

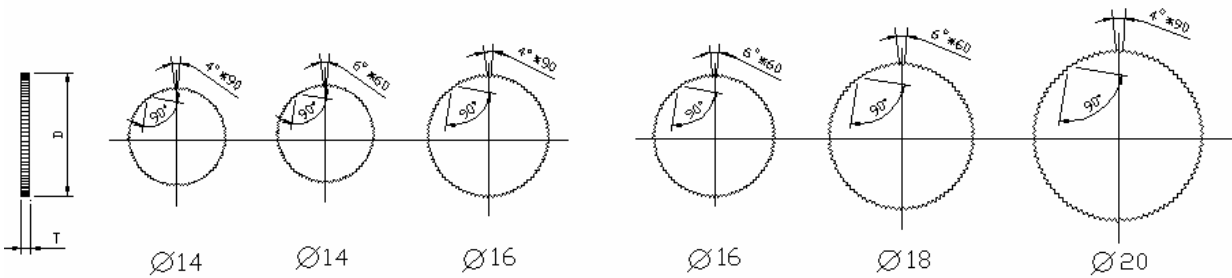
Dimensions



CIRCUIT



Shaft Type



(Unit:mm)

D	$\phi 14$	$\phi 14$	$\phi 14$	$\phi 16$	$\phi 16$	$\phi 16$	$\phi 17$	$\phi 18$	$\phi 18$	$\phi 18$	$\phi 20$
T	1.0	2.0	2.8	1.0	2.0	2.8	2.8	1.0	2.0	2.8	2.8

10mm Ultra Thin Micro Rotary Potentiometers

Electrical Characteristics

Total Resistance	500Ω ~ 1MΩ				
Total Resistance Tolerance	± 20%				
Resistance Taper	A. B. C. D. W. Taper				
Resistance Taper Characteristics	A50%	B50%	C50%	D50%	W50%
	15-25%	40-60%	75-85%	2-15%	45-55%
Rated Power	0.05 W				
Residual Resistance	R ≅ 250KΩ 0.1%				
	250KΩ > R > 10KΩ		20ΩMax. (between Term. 1, 2)		
	10KΩ ≅ R		20ΩMax. (between Term. 1, 2)		
Noise	100 mV MAX.				
Gang Error	-40dB ~ 0db ≦ 4 db				
Max. Operation Voltage	AC 50V; DC12V				
Insulation Resistance	DC 100V 100MΩ				
Withstand Voltage	1 minute at AC 100V				
Rotational Life	10,000 Cycles				

Mechanical Characteristics

Total Rotational Angle	270° ± 10°
Stopper Strength	0.8kgf.cm max./3 minute.
Rotational Torque	20 ~ 100 gf.cm
Shaft Pull-Push Strength	Pull 0.5Kg.f max.
	Push 0.2Kg.f max.
Soldering Heat	300°C, 3sec (Only for Hand-Soldering)