



SONG HUEI ELECTRIC CO.,LTD

16mm Rotary Remote Control Potentiometer

RCS-1601

(Dual Units Sealed Type)

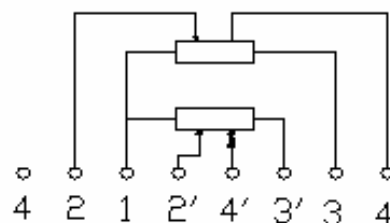
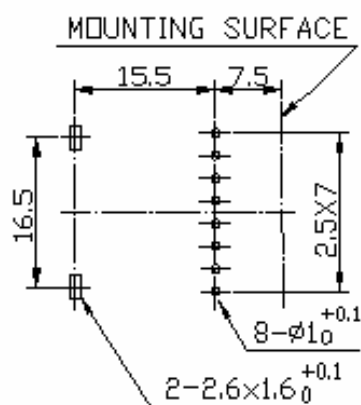
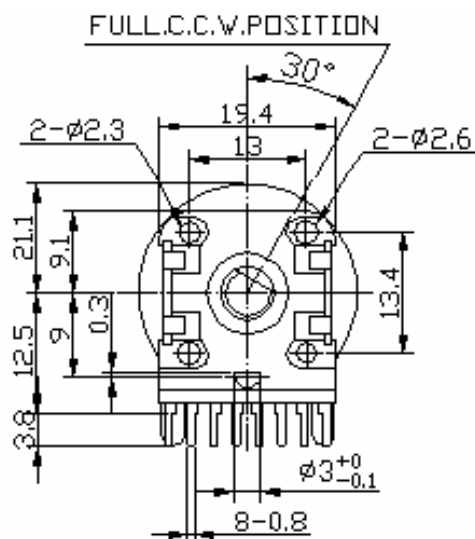
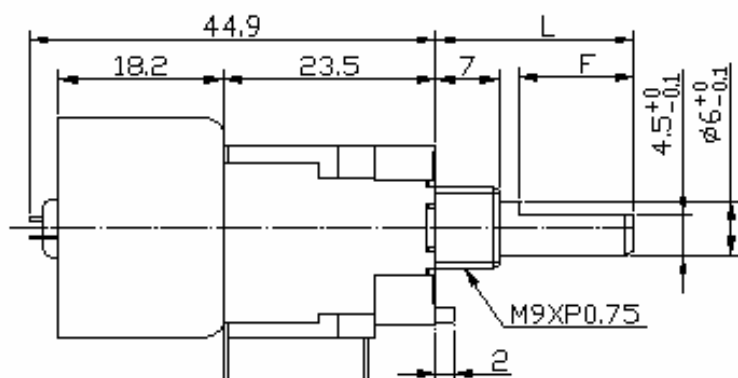


Part Number

RCS-1601 - **B** **50K**, L - **20** **KC**
Taper Resistance Value Shaft Type
Shaft Length

★ This item is also available with 4-ganged (RCS-1602), 6-ganged (RCS-1603), 8-ganged (RCS-1604).

Dimensions



16mm Rotary Remote Control Potentiometer

RCS-1603

(6-Ganged Sealed Type)



Part Number

RCS-1603 - B 50K, L - 20 KC

Taper

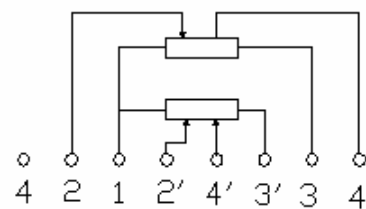
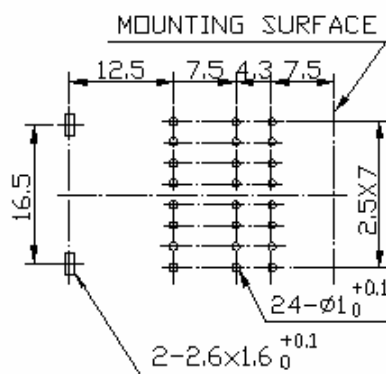
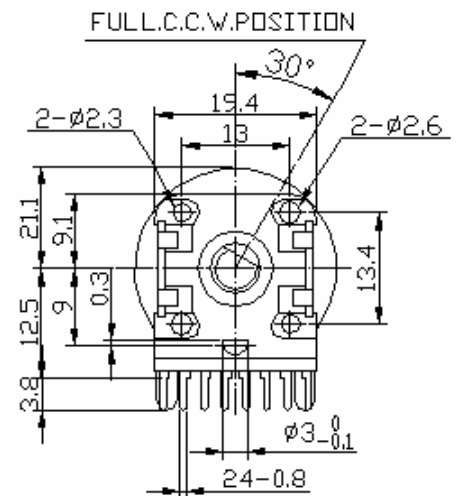
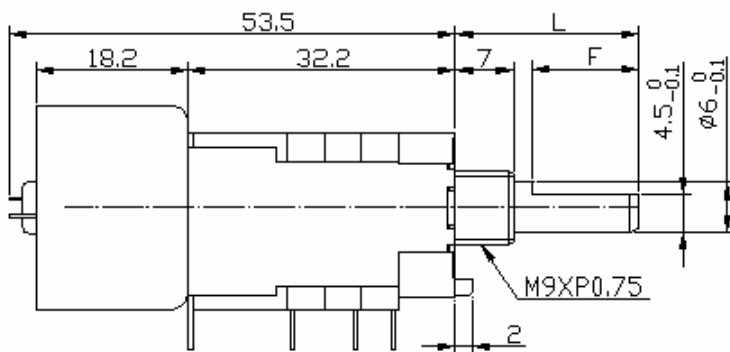
Resistance Value

Shaft Type

Shaft Length

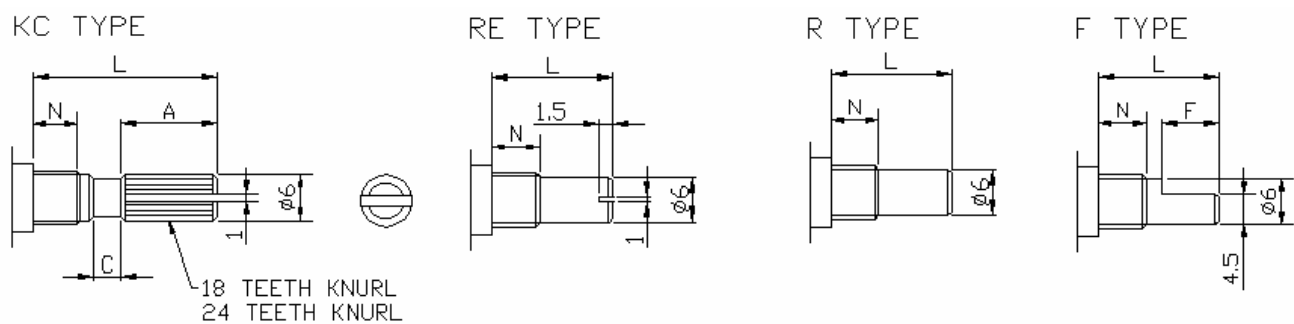
★ This item is also available with dual units (RCS-1601), 4-ganged (RCS-1602), 8-ganged (RCS-1604).

Dimensions



16mm Rotary Remote Control Potentiometer

Shaft Type



N:5m/m

SHAFT-TYPE	L	10	15	20	25	30	35	40
KC	A	3.2	6	10	12	12	12	12
	C	0.5	1	2	2	4	4	4
F	F	4	7	12	12	12	12	12
R,RE	L	10	15	20	25	30	35	40

N:6.5m/m

SHAFT-TYPE	L	10	15	20	25	30	35	40
KC	A	2.2	6	10	12	12	12	12
	C	0.5	1	2	2	4	4	4
F	F	2.5	7	12	12	12	12	12
R,RE	L	10	15	20	25	30	35	40

16mm Rotary Remote Control Potentiometer

Electrical Characteristics

All Resistance	500Ω ~ 2MΩ				
All Resistance Tolerance	± 20%				
Resistance Taper	A. B. C. D. W. Taper				
Resistance Taper Characteristics	A50%	B50%	C50%	D50%	W50%
	15-25%	40-60%	75-85%	2-15%	45-55%
Rated Power	0.063 W				
Max. Operating Voltage	B Taper :AC150V, Other Taper: AC 200V				
Residual Resistance	$R \leq 250K\Omega$ 0.1% $250K\Omega > R > 10K\Omega$ 10ΩMax. (between Term. 1, 2) $10K\Omega \leq R$ 10ΩMax. (between Term. 1, 2)				
Gang Error	-40 ~ 0db ≤ 3 db				
Noise	47 mV max.				
Insulation Resistance	Potentiometer Section: DC 250V 100MΩ				
	Motor Section: DC 100V 1MΩ				
Withstand Voltage	1 minute AC 300V				
Motor Voltage	4~6 VDC				
Operating current	100mA Max (at rotation) 150mA Max (at end slip)				
Sliding Life	10,000 Cycles				

Mechanical Characteristics

Total Rotational Angle	300° ± 5°
Stopper Strength	8kgf.cm max./3 minute.
Rotational Torque	100~450gf.cm (Hand operation)
Rotational Speed	12 ±3 sec. (at 4.5VDC applied to motor)
Solder Heat	300°C, 3Sec. (Only For Hand-Soldering)
Remark	Shaft: Aluminum Zinc; Bushing Material: Cast Iron