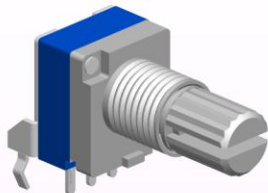




9mm Metal Shaft Rotary Potentiometer

RK0951N



Part Number

RK0951N – B 50K, L- 20 KC/N=5

Taper

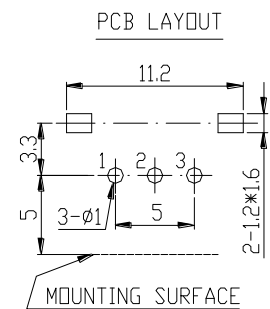
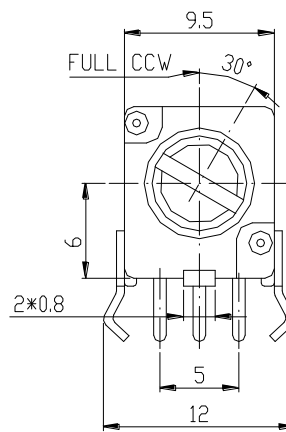
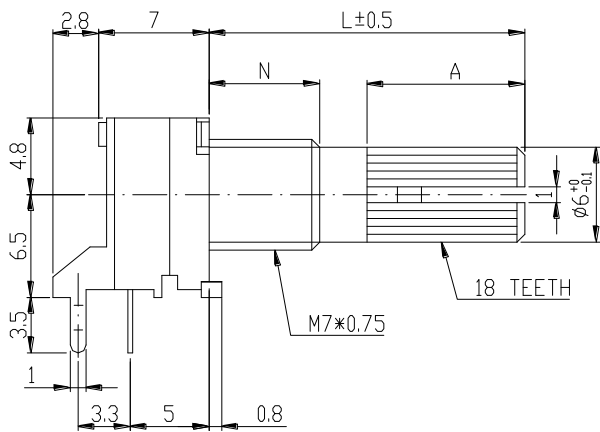
Shaft Length

Bush Length

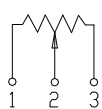
Resistance value

Shaft Type

Dimensions

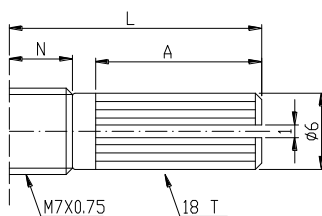


CIRCUIT



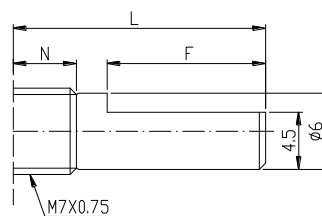
Shaft Type

KC Type



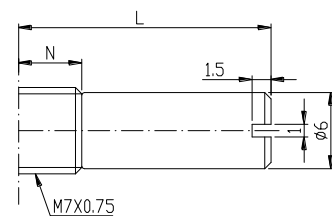
N=5mm				
L	10KC	12.5KC	15KC	20KC
A	4	7	7	12
N=7mm				
L	15KC	20KC	25KC	
A	7	12	12	

F Type



N=5mm			
L	15F	20F	
F	7	12	
N=7mm			
L	15F	20F	25F
F	7	12	12

RE Type



N=5mm			
L	8RE	10RE	15RE
N=7mm			
L	15RE		



9mm Metal Shaft Rotary Potentiometer

RK0951G



Part Number

RK0951G – B 50K, L- 20 KC/N=5

Taper

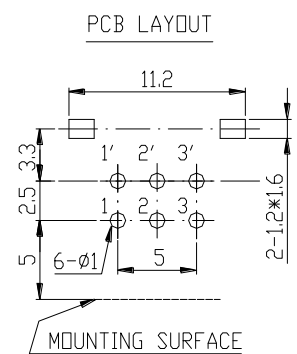
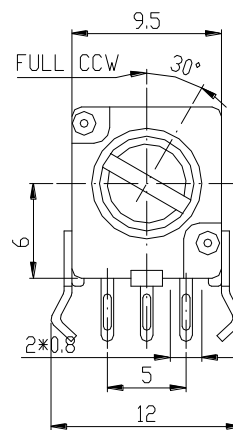
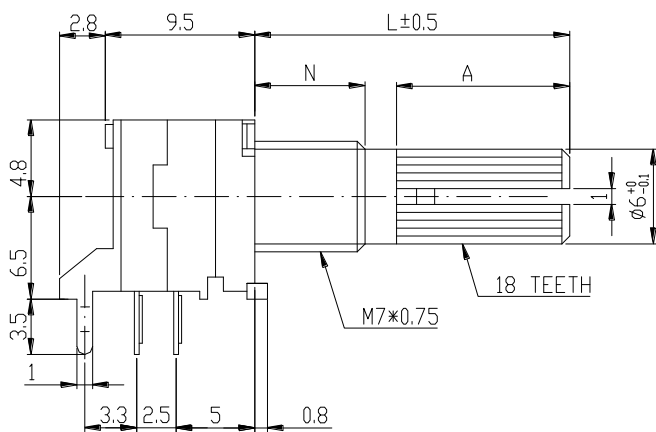
Shaft Length

Bush Length

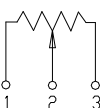
Resistance value

Shaft Type

Dimensions

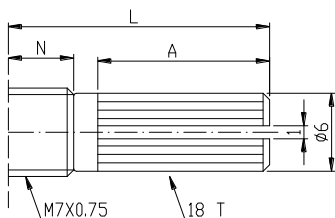


CIRCUIT



Shaft Type

KC Type



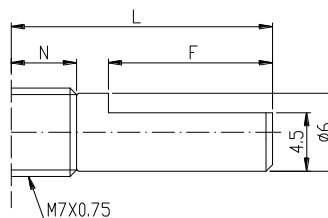
N=5mm

L	10KC	12.5KC	15KC	20KC
A	4	7	7	12

N=7mm

L	15KC	20KC	25KC
A	7	12	12

F Type



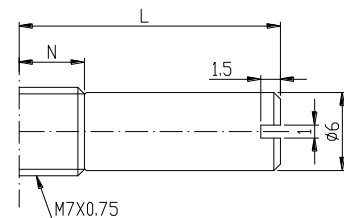
N=5mm

L	15F	20F
F	7	12

N=7mm

L	15F	20F	25F
F	7	12	12

RE Type



N=5mm

L	8RE	10RE	15RE
---	-----	------	------

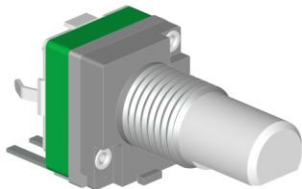
N=7mm

L	15RE
---	------



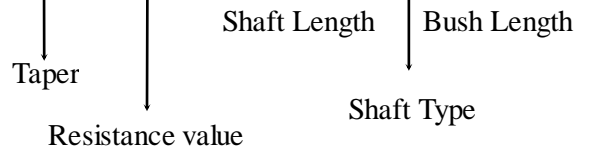
9mm Metal Shaft Rotary Potentiometer

RK0952N

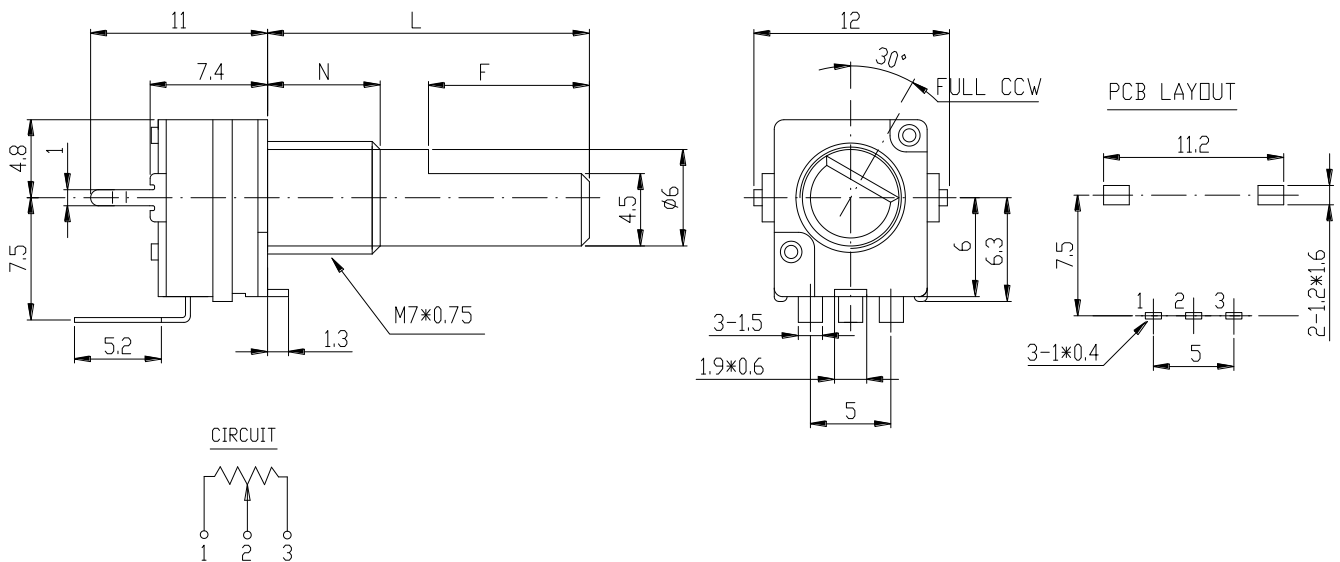


Part Number

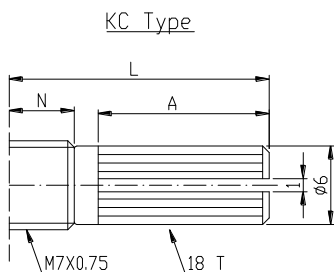
RK0952N – B 50K, L- 20 F /N=5



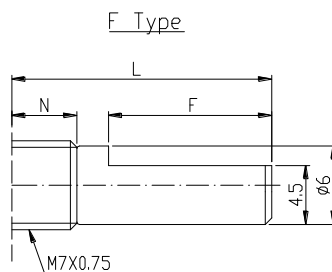
Dimensions



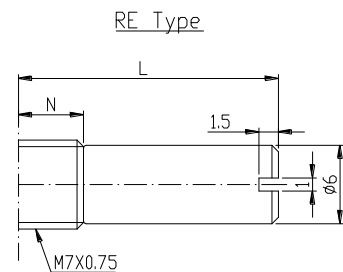
Shaft Type



N=5mm				
L	10KC	12.5KC	15KC	20KC
A	4	7	7	12
N=7mm				
L	15KC	20KC	25KC	
A	7	12	12	



N=5mm		
L	15F	20F
F	7	12
N=7mm		
L	15F	20F
F	7	12

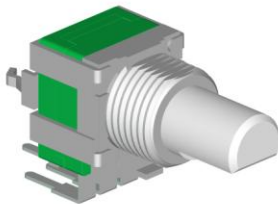


N=5mm		
L	8RE	10RE
N=7mm		
L	15RE	



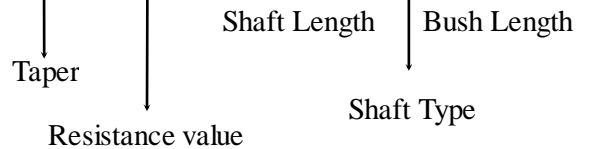
9mm Metal Shaft Rotary Potentiometer

RK0952G

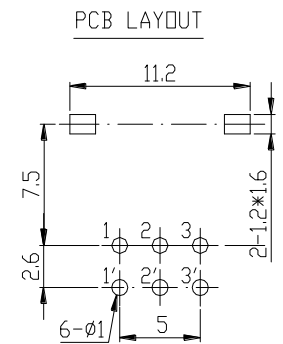
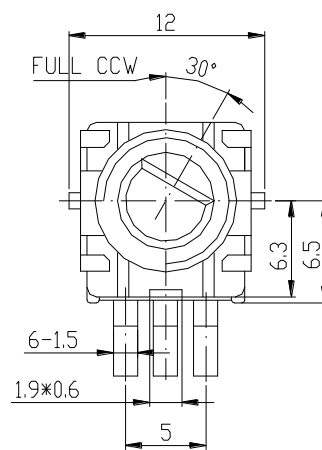
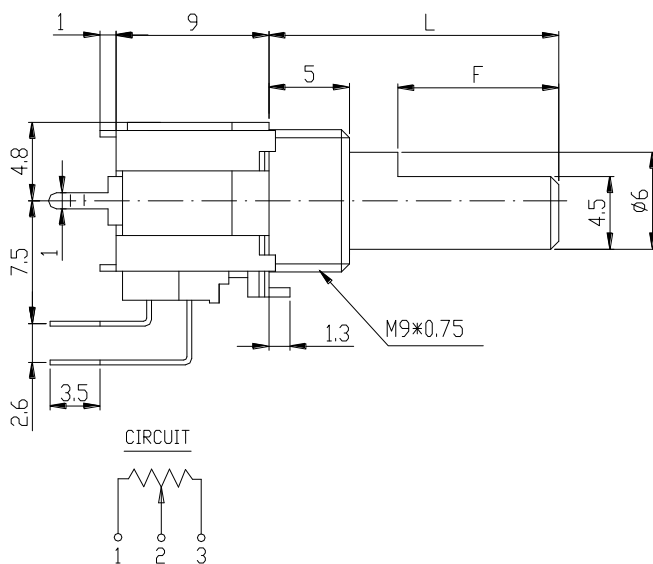


Part Number

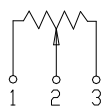
RK0952G – B 50K, L- 20 KC/N=5



Dimensions

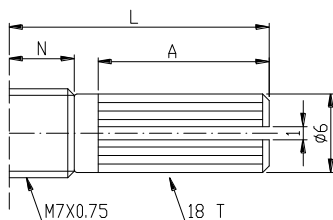


CIRCUIT



Shaft Type

KC Type



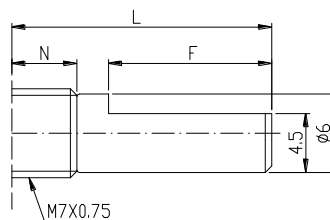
N=5mm

L	10KC	12.5KC	15KC	20KC
A	4	7	7	12

N=7mm

L	15KC	20KC	25KC
A	7	12	12

F Type



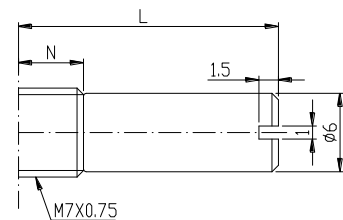
N=5mm

L	15F	20F
F	7	12

N=7mm

L	15F	20F	25F
F	7	12	12

RE Type



N=5mm

L	8RE	10RE	15RE
---	-----	------	------

N=7mm

L	15RE
---	------

**9mm Metal Shaft Rotary Potentiometer****General**

Operating temperature	-10 °C ~ +70 °C
Manual soldering	300 °C Max 3sec

Electrical Characteristics

Total resistance	1K Ω ~ 500K Ω
Resistance tolerance	$\pm 20\%$ (More Than 1M Ω $\pm 30\%$)
Resistance taper	A B C W
Sliding noise	Less than 68 mV
Residual resistance	$\leq 20 \Omega$
Insulation resistance	More than 100M Ω at DC 250V
Rated power(W)	0.05W
Max. Operating voltage	50V AC
Withstand voltage	1 Minute at AC 300 V
Gang error	Linear (B) taper : 0~-20 dB ≤ 2 dB A/C Other tapers : 0~-40 dB ≤ 3 dB

Mechanical Characteristics 機械特性

Total rotational angle	300° \pm 5°
Rotational torque	20 ~ 250 gf.cm
Rotational stopper strength	4Kgf.cm Min
Shaft push-pull strength	8Kgf. Max
Rotational life	10,000 Cycles.