



**12mm Metal Shaft Rotary Potentiometer – With Switch**

**RK1233NS**

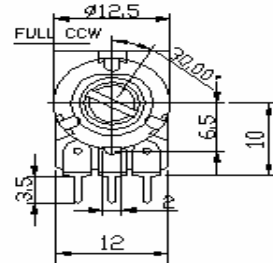
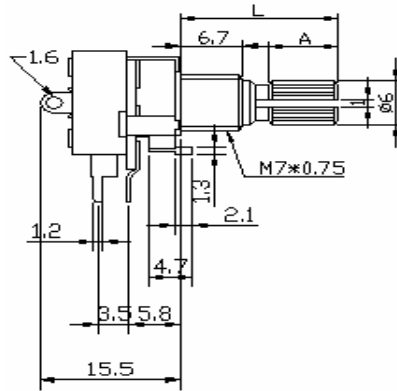


**Part Number**

**RK1233NS - B 50K, L - 20 KC**

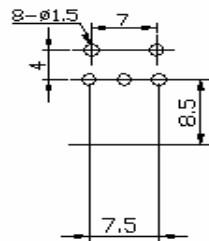
↓ Taper      ↓ Resistance Value      ↓ Shaft Type  
 With Switch      Shaft Length

**Dimensions**

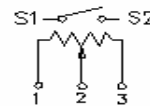


<b>H</b>	<b>10</b>	<b>12.5</b>
----------	-----------	-------------

**P.C.B. LAYOUT**

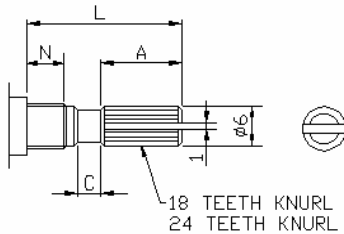


**CIRCUIT**

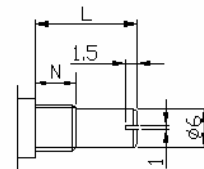


**Shaft type**

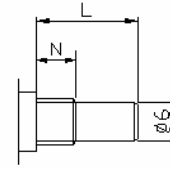
**KC TYPE**



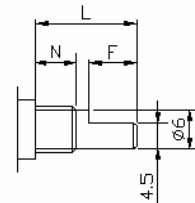
**RE TYPE**



**R TYPE**



**F TYPE**



N:5m/m

SHAFT-TYPE	L	10	15	20	25	30	35	40
KC	A	3.2	6	10	12	12	12	12
	C	0.5	1	2	2	4	4	4
F	F	4	7	12	12	12	12	12
R,RE	L	10	15	20	25	30	35	40

N:6.5m/m

SHAFT-TYPE	L	10	15	20	25	30	35	40
KC	A	2.2	6	10	12	12	12	12
	C	0.5	1	2	2	4	4	4
F	F	2.5	7	12	12	12	12	12
R,RE	L	10	15	20	25	30	35	40

# 12mm Metal Shaft Rotary Potentiometer – With Switch

**RK1233GS**

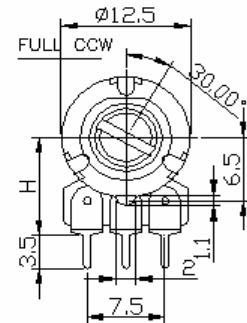
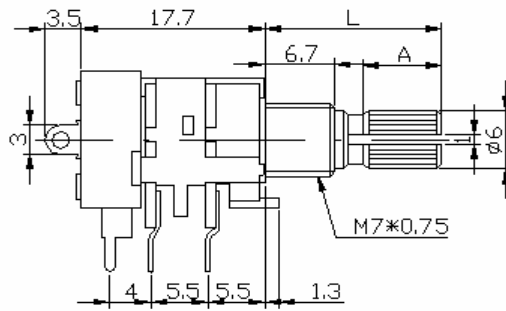


**Part Number**

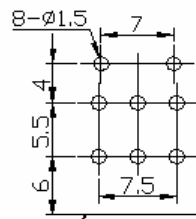
**RK1233GS - B 50K, L - 20 KC**

↓ Taper      ↓ Resistance Value      ↓ Shaft Type  
 With Switch      Shaft Length

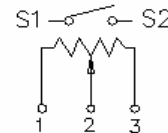
## Dimensions



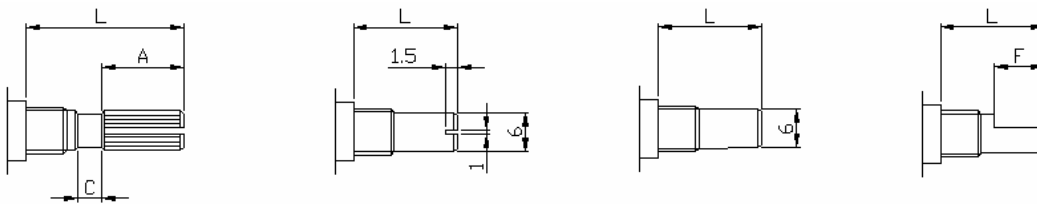
P.C.B LAYOUT



CIRCUIT



## Shaft Type



N:5m/m

SHAFT-TYPE	L	10	15	20	25	30	35	40
KC	A	3.2	6	10	12	12	12	12
	C	0.5	1	2	2	4	4	4
F	F	4	7	12	12	12	12	12
R,RE	L	10	15	20	25	30	35	40

N:6.5m/m

SHAFT-TYPE	L	10	15	20	25	30	35	40
KC	A	2.2	6	10	12	12	12	12
	C	0.5	1	2	2	4	4	4
F	F	2.5	7	12	12	12	12	12
R,RE	L	10	15	20	25	30	35	40

# 12mm Metal Shaft Rotary Potentiometer – With Switch

## Electrical Characteristics

Total Resistance	1K ~ 500K $\Omega$				
Total Resistance Tolerance	$\pm 20\%$				
Resistance Taper	A. B. C. D. W. Taper				
Resistance Taper Characteristics	A50%	B50%	C50%	D50%	W50%
	15-25%	40-60%	75-85%	2-15%	45-55%
Rated Power	B Taper : 0.1 W; Other Taper : 0.05 W				
Residual Resistance	$R \leq 250K\Omega$ 0.1%				
	$250K\Omega > R > 10K\Omega$		20 $\Omega$ max. (between Term. 1, 2)		
	$10K\Omega \geq R$		20 $\Omega$ max. (between Term. 1, 2)		
Max. Operation Voltage	AC 50V , DC 20V				
Gang Error	-40 ~ 0db $\leq$ 3db				
Switch Rated Power	DC 16V 3.0A, AC 125V 1.0A				
Switch Contact Resistance	0.5m $\Omega$ Max.				
Noise	47 mV Max.				
Insulation Resistance	DC 250V 100M $\Omega$				
Withstand Voltage	1 minute at AC 300V				
Sliding Life	10,000 Cycles				

## Mechanical Characteristics

Total Rotational Angle	300° $\pm$ 5°
Stopper Strength	3 kgf.cm max./3sec.
Switch Action	150~350g.cm
Switch Rotational Angle	35° $\pm$ 5°
Rotational Torque	20~200gf.cm
Pull-Push Strength	5 kgf.cm max./3sec.

<b>Soldering Heat</b>	<b>300°C , 3sec. (Only for Hand-Soldering)</b>
<b>Remark</b>	<b>Shaft: Cast Iron or Aluminum Zinc Bushing Material: Cast Iron or Aluminum Zinc</b>