



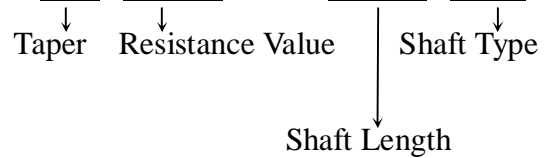
**12mm Metal Shaft Rotary Potentiometer**

**RK1233N1**

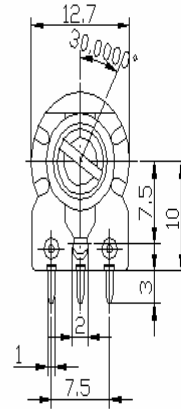
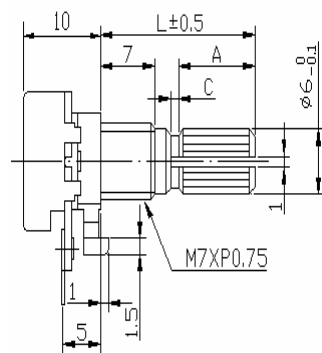


**Part Number**

**RK1233N1 - B 50K, L - 20 KC**



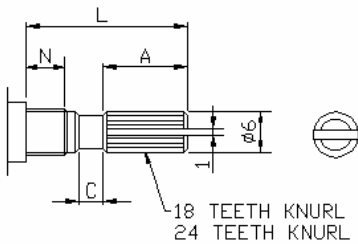
**Dimensions**



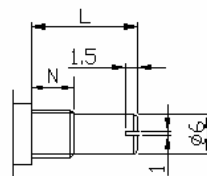
<b>H</b>	<b>10</b>	<b>12.5</b>
----------	-----------	-------------

**Shaft Types**

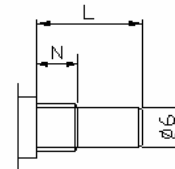
KC TYPE



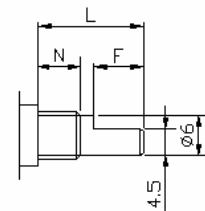
RE TYPE



R TYPE



F TYPE



N:5m/m

SHAFT-TYPE	L	10	15	20	25	30	35	40
KC	A	3.2	6	10	12	12	12	12
	C	0.5	1	2	2	4	4	4
F	F	4	7	12	12	12	12	12
R,RE	L	10	15	20	25	30	35	40

N:6.5m/m

SHAFT-TYPE	L	10	15	20	25	30	35	40
KC	A	2.2	6	10	12	12	12	12
	C	0.5	1	2	2	4	4	4
F	F	2.5	7	12	12	12	12	12
R,RE	L	10	15	20	25	30	35	40

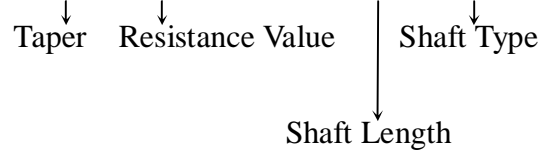
# 12mm Metal Shaft Rotary Potentiometer

**RK1233N2**

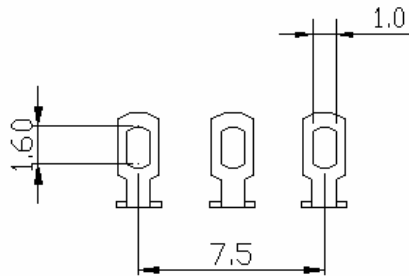
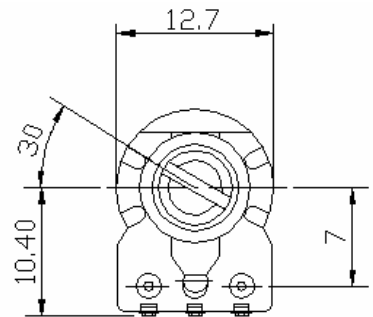
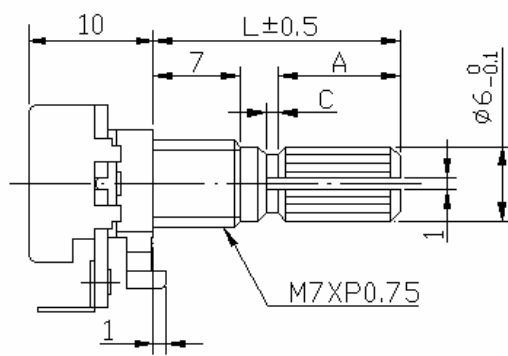


## Part Number

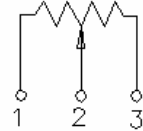
**RK1233N2 - B 50K, L - 20 KC**



## Dimensions

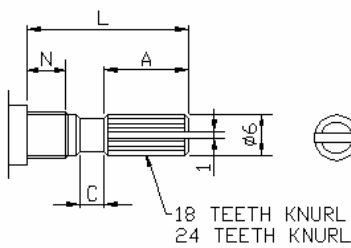


## CIRCUIT

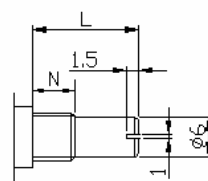


## Shaft Type

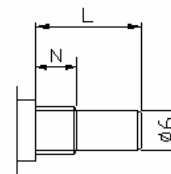
### KC TYPE



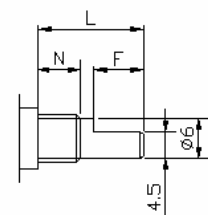
### RE TYPE



### R TYPE



### F TYPE



N:5m/m

SHAFT-TYPE	L	10	15	20	25	30	35	40
KC	A	3.2	6	10	12	12	12	12
	C	0.5	1	2	2	4	4	4
F	F	4	7	12	12	12	12	12
R,RE	L	10	15	20	25	30	35	40

N:6.5m/m

SHAFT-TYPE	L	10	15	20	25	30	35	40
KC	A	2.2	6	10	12	12	12	12
	C	0.5	1	2	2	4	4	4
F	F	2.5	7	12	12	12	12	12
R,RE	L	10	15	20	25	30	35	40



# 12mm Metal Shaft Rotary Potentiometer

**RK1233G2**

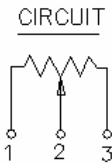
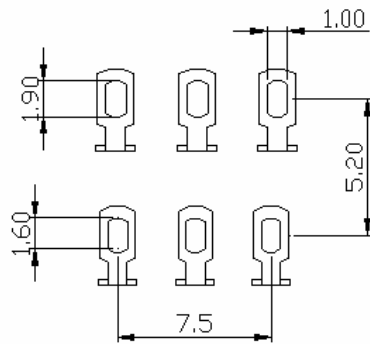
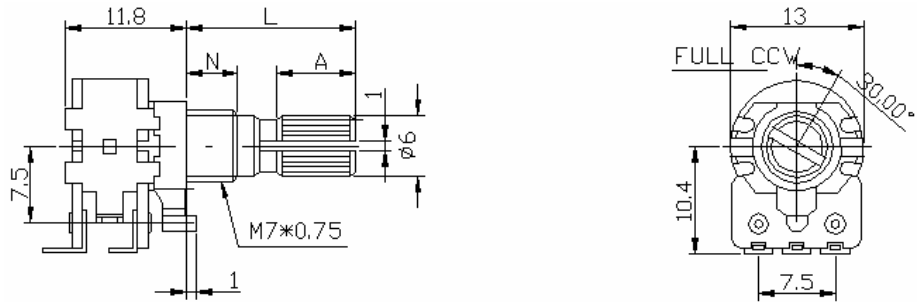


**Part Number**

**RK1233G2 - B 50K, L - 20 KC**

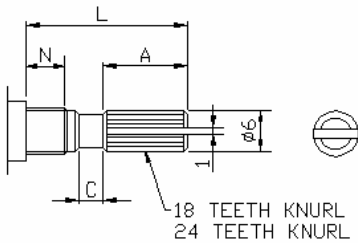
↓ Taper    ↓ Resistance Value    ↓ Shaft Type  
 ↓ Shaft Length

## Dimensions

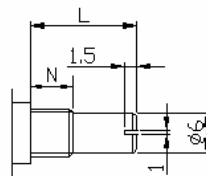


## Shaft Types

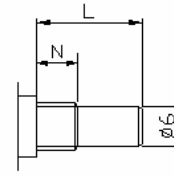
KC TYPE



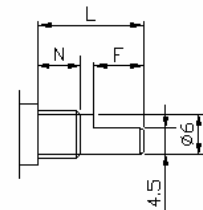
RE TYPE



R TYPE



F TYPE



N:5m/m

SHAFT-TYPE	L	10	15	20	25	30	35	40
KC	A	3.2	6	10	12	12	12	12
	C	0.5	1	2	2	4	4	4
F	F	4	7	12	12	12	12	12
R,RE	L	10	15	20	25	30	35	40

N:6.5m/m

SHAFT-TYPE	L	10	15	20	25	30	35	40
KC	A	2.2	6	10	12	12	12	12
	C	0.5	1	2	2	4	4	4
F	F	2.5	7	12	12	12	12	12
R,RE	L	10	15	20	25	30	35	40

# 12mm Metal Shaft Rotary Potentiometer

## Electrical Characteristics

Total Resistance	1K ~ 500K $\Omega$				
Total Resistance Tolerance	$\pm 20\%$				
Resistance Taper	A. B. C. D. W. Taper				
Resistance Taper Characteristics	A50%	B50%	C50%	D50%	W50%
	15-25%	40-60%	75-85%	2-15%	45-55%
Rated Power	B Taper : 0.1 W; Other Taper : 0.05 W				
Residual Resistance	$R \geq 250K\Omega$		0.1%		
	$250K\Omega > R > 10K\Omega$		20 $\Omega$ max. (between Term. 1, 2)		
	$10K\Omega \geq R$		20 $\Omega$ max. (between Term. 1, 2)		
Max. Operation Voltage	AC 50V , DC 20V				
Noise	47 mV Max.				
Insulation Resistance	DC 250V 100M $\Omega$				
Withstand Voltage	1 minute at AC 300V				
Rotary Life	10,000 Cycles				

## Mechanical Characteristics

Total Rotational Angle	300° $\pm$ 5°
Stopper Strength	3 kgf.cm max./3sec.
Rotational Torque	20~200gf.cm
Pull-Push Strength	5 kgf.cm max./3sec.

<b>Soldering Heat</b>	<b>300°C , 3sec. (Only for Hand-Soldering)</b>
<b>Remark</b>	<b>Shaft: Cast Iron or Aluminum Zinc Bushing Material: Cast Iron or Aluminum Zinc</b>