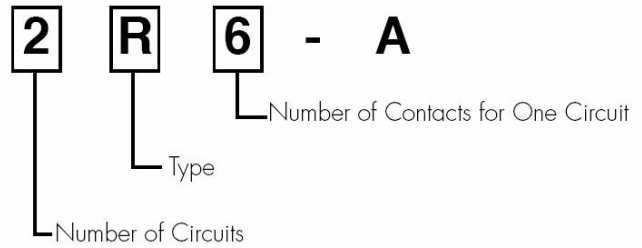


## 2R6-A SERIES



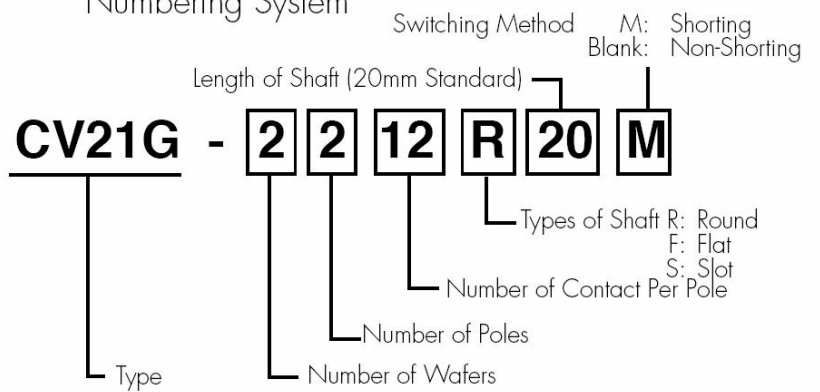
### Numbering System



## CV21G SERIES



### Numbering System



### Specifications

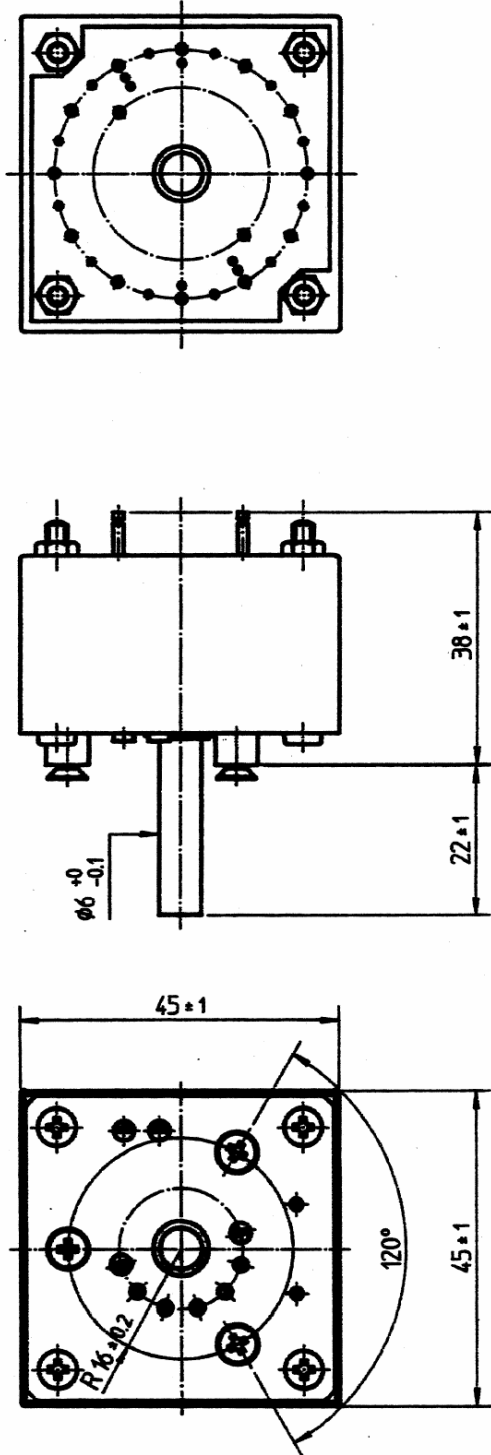
Model

- Number of Wafers
- Number of Poles(Ways)
- Number of Contacts Per Pole
- Contact Resistance
- Contact Rating (Max.)
- Contact Material
- Indexing Angle
- Changeover Timing
- Insulating Material
- Insulating Resintance (Contact : Frame)
- Proof Voltage (Contact : Frame)
- Life (Cycles)

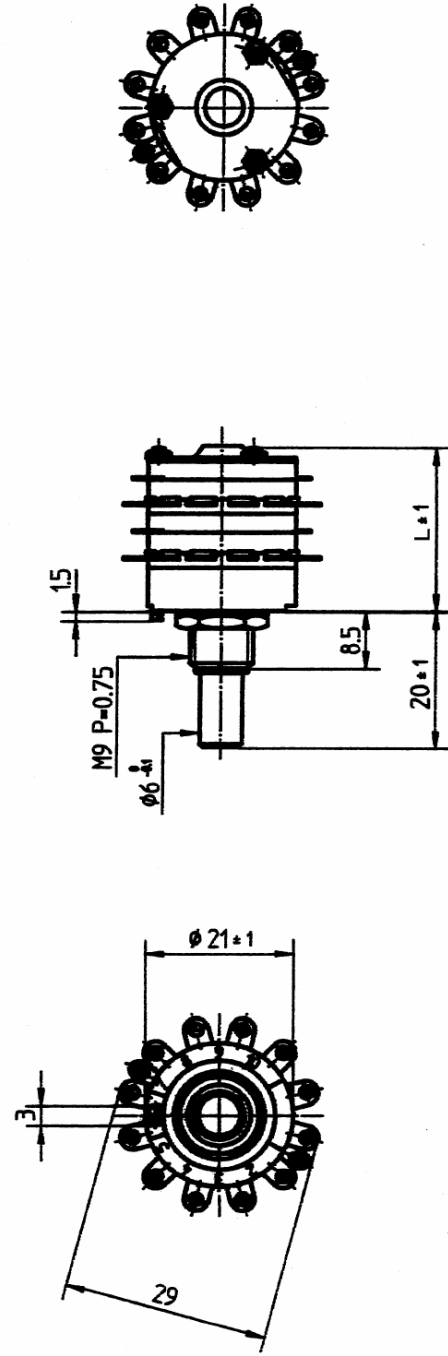
2R6-A SERIES				CV21G SERIES	
2R6-A	4R6-A	2R12-A	4R12-A	CV21G-2212R20	CV21G-4412R20
1	2	2	4	2	4
2	4	2	4	2	4
6		12			
≤5mΩ				≤15mΩ	
AC 100V 1A				AC 60V 0.1A	
Solid Ag				Au Plating	
30°					
Non-Shorting					
Phenol					
≥100MΩ at DC 1,000V				≥100MΩ at DC 500V	
AC 1,000V				AC 500V	
≥30,000				≥10,000	

## Dimensions

2R6A (Other types omitted)



CV21G Series



	1	2	3	4
L(mm)	16.5	24	31.5	39