

RS300/400/500 Series

Outline

Our RS series embody the manufacturing history of our company. All series are sturdy and solid with high dependability designed for control units of plants, installations, audio equipments, etc.

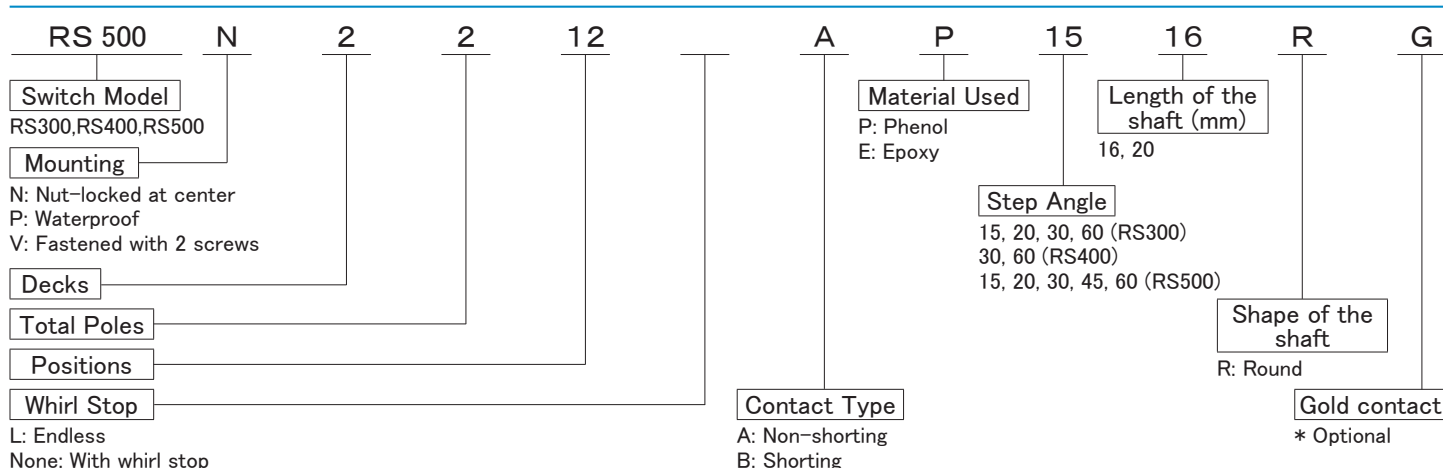
Features

- Free to change the number of switch positions by replacing self-tapping screws
- Various combinations of double shafted model available
- RoHS compliant

Specifications

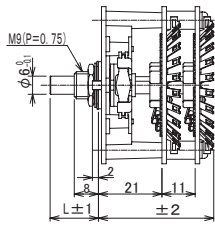
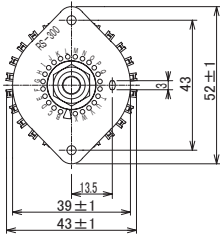
	RS300	RS400	RS500
Step Angles	15/20/30/60	30/60	15/20/30/45/60
Switching Mechanism	15/20: Shorting 30/60: Non-shorting	Shorting and Non-shorting selectable	15/20: Shorting 30/45/60: Non-shorting
Water Proofing	-----	Adapter panel and rubber o-rings provided at requests	
Gold Contacts	Available		
High-Voltage Withstanding	Available (Up to 6,000V)	-----	
Operating Temperature	-20℃ +70℃		
Storage Temperature	-40℃ +C70℃		
Rotational Torque	0.12N · m ~ 0.35N · m	0.10N · m ~ 0.25N · m	
Terminal Strength	10N		
Nut Tightening Torque	2N · m		
Vibration Resistance	10Hz ~ 55Hz ~ 10Hz/min (vibrated for 1.5mm to each XYZ direction) No defect found under conditions above		
Heat Resistance of Solder	350±10℃ , 3 seconds ±1		
Contact Resistance	(1kHz±200Hz of voltage 20mV. 50mA or less)		
	5mΩ max.	15mΩ max.	10mΩ max.
Insulation Resistance	After 1 min. of 500VDC Phenol 1,000MΩ ≤ Epoxy 50,000MΩ ≤		
Withstanding Voltage	1,000VAC 1min.	500VAC 1min.	
Rated Value	AC	30V 3.0A/200V 0.5A	30V 1.5A/200V 0.2A
	DC	20V 3.0A/200V 0.2A	20V 1.0A/200V 0.1A
Durability	at least 50,000 strokes		

Part Number Designation



RS300_Dimensions (mm)

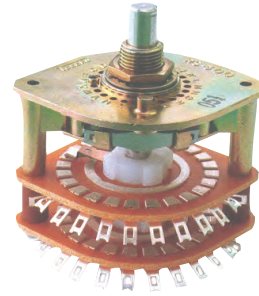
Bushing



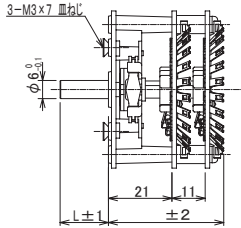
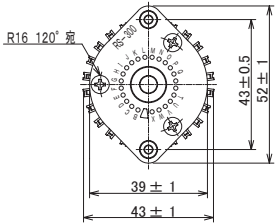
Panel Mounting Hole Dimensions (mm)



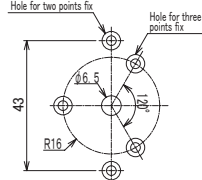
RS300/400/500N accessories
M9 Nut (t=2mm)
M9 Toothed lock washer (t=1mm)
Washer (t=0.5mm)



Two screws fix



Panel Mounting Hole Dimensions (mm)



RS300V accessory
Three M3x7 screws
(for two points fix, with two screws)

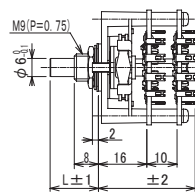
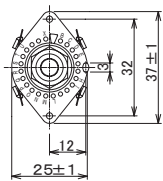
Length

	(mm)		
	Standard shaft length		
L	16	18	20

Number of Layers (mm)	1	2	3	4
	27	38	49	60

RS400_Dimensions (mm)

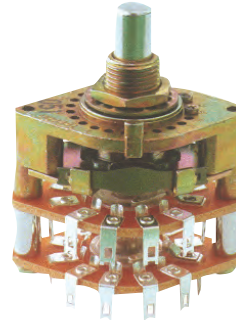
Bushing



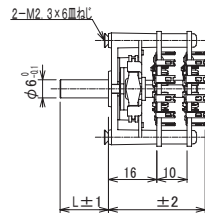
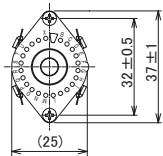
Panel Mounting Hole Dimensions (mm)



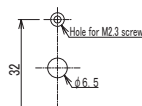
*φ3.2hole not needed for waterproof
RS300/400/500N accessories
M9 Nut (t=2mm)
M9 Toothed lock washer (t=1mm)
Washer (t=0.5mm)



Two screws fix



Panel Mounting Hole Dimensions (mm)



RS400V accessory
Two M2.3x6 screw

Length

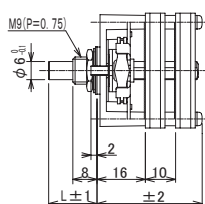
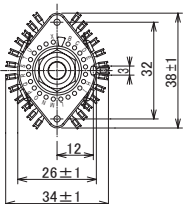
	(mm)		
	Standard shaft length		
L	16	18	20

Number of Layers (mm)	1	2	3	4
	22(26)	32(41)	42(56)	52(71)

() : for all contacts type

RS500_Dimensions (mm)

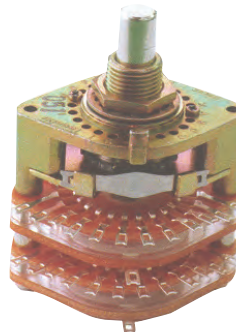
Bushing



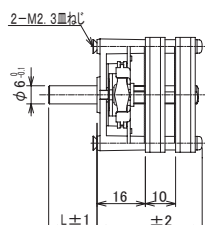
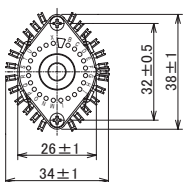
Panel Mounting Hole Dimensions (mm)



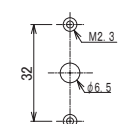
*φ3.2hole not needed for waterproof
RS300/400/500N accessories
M9 Nut (t=2mm)
M9 Toothed lock washer (t=1mm)
Washer (t=0.5mm)



Two screws fix



Panel Mounting Hole Dimensions (mm)



RS500V accessory
Two M2.3x6 screw

Length

	(mm)		
	Standard shaft length		
L	16	18	20

Number of Layers (mm)	1	2	3	4
	26	36	46	56