

# Schaftausführungen – Metall

## Für Potentiometer Serien 12/16/17/24mm

### METAL SHAFT SERIES

#### STANDARD SHAFT, BUSHING, NUT AND WASHER DIMENSIONS

KC-TYPE

Not specified  
Slotting angle

KC (18 TEETH KNURL)  
KC (24 TEETH KNURL)

RE-TYPE

R-TYPE

F-TYPE

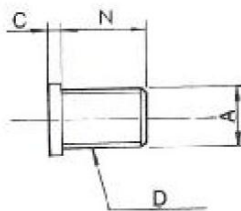
N:5m/m

SHAFT-TYPE	L	10	15	20	25	30	35	40
KC	A	3.2	6	10	12	12	12	12
	C	0.5	1	2	2	4	4	4
F	F	4	7	12	12	12	12	12
R,RE	L	10	15	20	25	30	35	40

N:6.5m/m

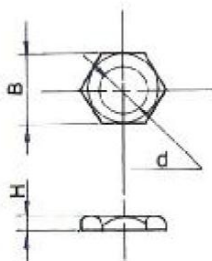
SHAFT-TYPE	L	10	15	20	25	30	35	40
KC	A	2.2	6	10	12	12	12	12
	C	0.5	1	2	2	4	4	4
F	F	2.5	7	12	12	12	12	12
R,RE	L	10	15	20	25	30	35	40

#### BUSHING SIZE



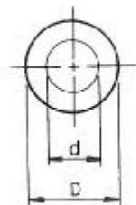
SERIES	R12K	R122KT	R17φ	16K&16T	R 24K	
A	φ7	φ7	φ7	φ7	φ8	φ9
N	5   7	6.2	5	5   6.5	6.5	
C	3.3	0.5	1	1.4	2	
D	M7x0.75	M7x0.75	M7x0.75	M7x0.75	M8x0.75 M9x0.75	

#### NUT.Size



d	B	H
M6x0.75	8	1.8
M7x0.75	10	2.2
M8x0.75	11	2.1
M9x0.75	12	2.1
M10x0.75	14	2.2
3/8"32NEF	12.6	2.3

#### WASHER Size



SERIES	d	D	t
M6	φ6.1	φ10	0.4
M7	φ7.1	φ12	0.4
M8	φ8.1	φ14	0.4
M9	φ9.1	φ14	0.4
M10	φ10.2	φ14.8	0.5
3/8"32NEF	φ9.7	φ16	0.4