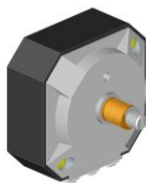




**SONG HUEI ELECTRIC CO.,LTD**

## 50mm Wire Wound Potentiometer

**PW50**



### Part Number

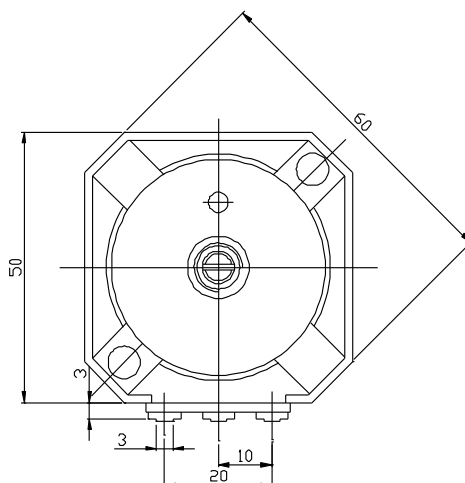
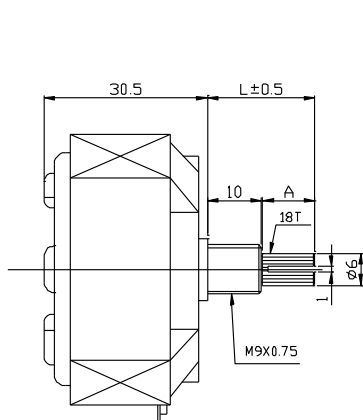
**PW50 – 10K, L- 15    KC**

Resistance value

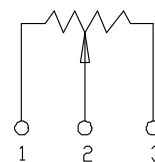
Shaft Length

Shaft Type

### Dimensions

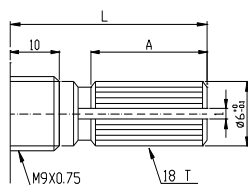


CIRCUIT

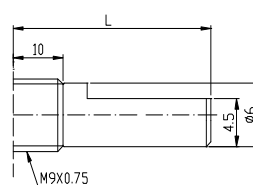


### Shaft Type

KC Type



F Type



KC	L=	16	20	30
	A=	5	10	10

F	L=	16	20	30
---	----	----	----	----

**50mm Wire Wound Potentiometer****General**

<b>Operating temperature</b>	<b>-10°C ~ +70°C</b>
<b>Manual soldering</b>	<b>300°C Max 3sec</b>

**Electrical Characteristics**

<b>Total resistance</b>	<b>5Ω ~ 50Ω</b>
<b>Resistance tolerance</b>	<b>± 20 %</b>
<b>Resistance taper</b>	<b>B Type</b>
<b>Rated power(W)</b>	<b>30 W</b>
<b>Insulation resistance</b>	<b>Over 100 MΩ with DC 500 V put between the terminal and the shaft.</b>
<b>Residual resistance</b>	<b>Less than 0.3 Ω</b>
<b>Withstand voltage</b>	<b>1 Minute against 50HZ 500V put between the terminal and the shaft.</b>

**Mechanical Characteristics**

<b>Total rotational angle</b>	<b>300 °± 5 °</b>
<b>Rotational torque</b>	<b>50 ~ 300 gf.cm</b>
<b>Nut fastening strength</b>	<b>10 ~ 12 Kgf.cm</b>
<b>Shaft push-pull strength</b>	<b>1 Kgf.cm</b>
<b>Rotational life</b>	<b>15,000 Cycles</b>