



# 16mm Metal Shaft Rotary Potentiometer – With Switch

**R16S2**

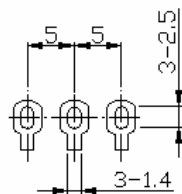
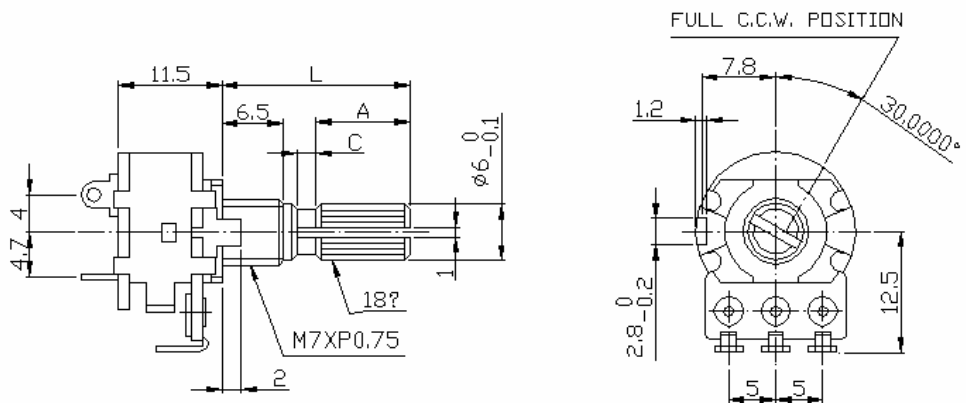


## Part Number

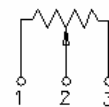
**R16S2 - B 50K, L - 20 KC**

↓ Taper     ↓ Resistance Value     ↓ Shaft Type  
 ↓ Shaft Length

## Dimensions

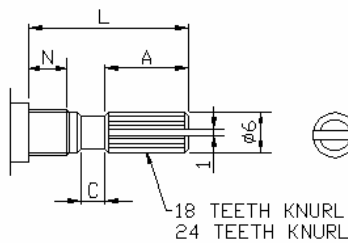


### CIRCUIT

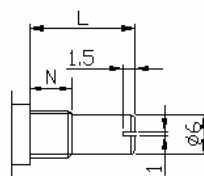


## Shaft Type

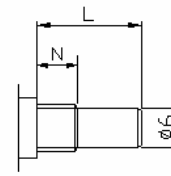
### KC TYPE



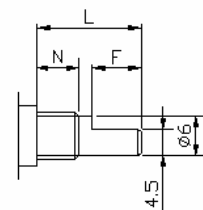
### RE TYPE



### R TYPE



### F TYPE



N:5m/m

SHAFT-TYPE	L	10	15	20	25	30	35	40
KC	A	3.2	6	10	12	12	12	12
	C	0.5	1	2	2	4	4	4
F	F	4	7	12	12	12	12	12
R,RE	L	10	15	20	25	30	35	40

N:6.5m/m

SHAFT-TYPE	L	10	15	20	25	30	35	40
KC	A	2.2	6	10	12	12	12	12
	C	0.5	1	2	2	4	4	4
F	F	2.5	7	12	12	12	12	12
R,RE	L	10	15	20	25	30	35	40

# 16mm Metal Shaft Rotary Potentiometer – With Switch

## Electrical Characteristics

All Resistance	500Ω ~ 2MΩ				
All Resistance Tolerance	± 20%				
Resistance Taper	A. B. C. D. W. Taper				
Resistance Taper Characteristics	A50%	B50%	C50%	D50%	W50%
	15-25%	40-60%	75-85%	2-15%	45-55%
Rated Power	B Taper: 0.2 W, Other Tapers: 0.1 W				
Max. Operation Voltage	B Taper: AC 150V, Other Tapers: AC 200V				
Residual Resistance	$R \leq 250K\Omega$ 0.1% $250K\Omega > R > 10K\Omega$ 20ΩMax. ( between Term. 1, 2) $10K\Omega \leq R$ 20ΩMax. ( between Term. 1, 2)				
Noise	47 mV max.				
Switch Rated Power	AC/DC 12 V 1.0A				
Switch Contact Resistance	Less than 0.5 MΩ				
Insulation Resistance	More than 100MΩat DC 500V				
Withstand Voltage	1 minute at AC 500V				
Rotary Life	15,000 Cycles				

## Mechanical Characteristics

Total Rotational Angle	300° ± 5°
Rotational Torque	30~200gf.cm
Stopper Strength	8kgf.cm max./3 minute
Switch Action	150~450g.cm
Switch Rotational Angle	35° ± 5°
Pull-Push Strength	10 kgf.cm max./3 minute
Switch Circuit	S.P.S.T.
Solder Heat	300°C,3s (Only For Hand-Soldering)
Remark	Shaft: Cast Iron or Aluminum Zinc. Bushing Material: Cast Iron or Aluminum Zinc.