

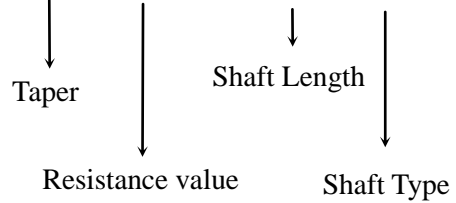


**17mm Metal Shaft Rotary Potentiometer - With Switch**

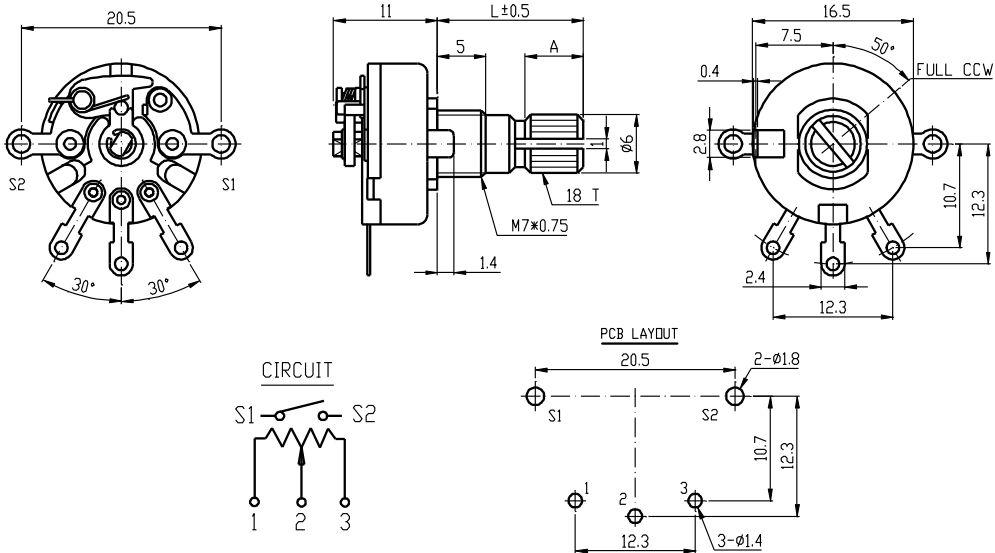


**Part Number**

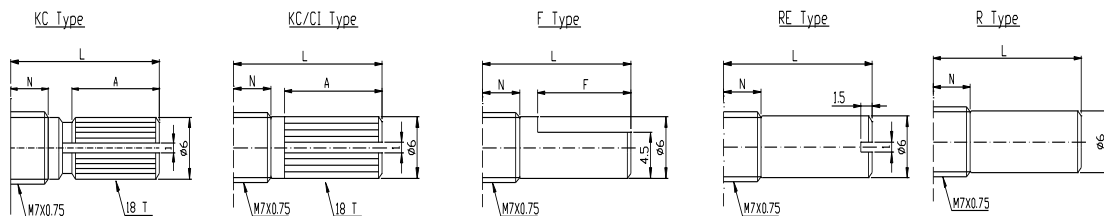
**17S1 – B 10K, L- 20 KC**



**Dimensions**



**Shaft Type**



		N=5mm									
Shaft Type	L	10	12	15	17	20	25	30	35	40	
KC	A	3.2		6	8	12	12	12	12	12	
	M	0.5		1	1	2	2	4	4	4	
KC/CI	A			8		13					
F	F	4	4	7	7	12	12	12	12	12	
R,RE	L	10		15	17	20	25	30	35	40	

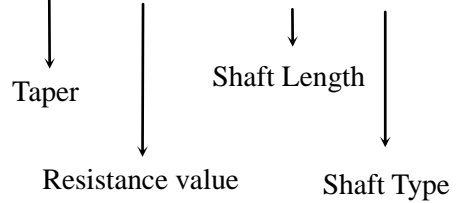


**17mm Metal Shaft Rotary Potentiometer - With Switch**

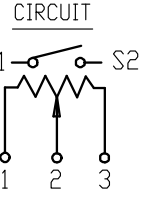
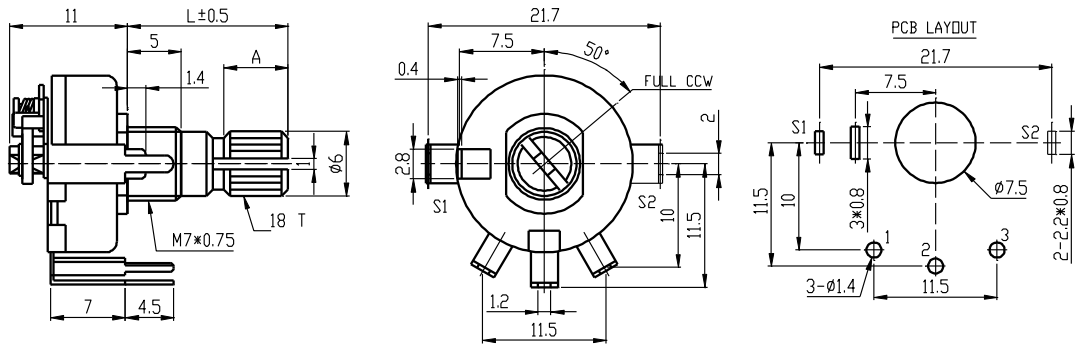


**Part Number**

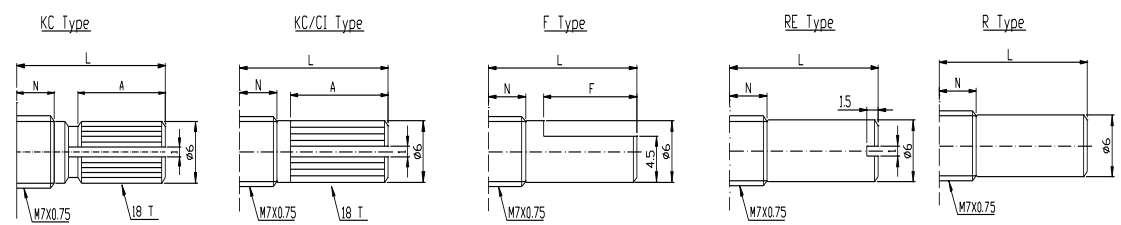
**17S2 – B 10K, L- 20 KC**



**Dimensions**



**Shaft Type**



N=5mm

Shaft Type	L	10	12	15	17	20	25	30	35	40
KC	A	3.2		6	8	12	12	12	12	12
	M	0.5		1	1	2	2	4	4	4
KC/CI	A			8		13				
F	F	4	4	7	7	12	12	12	12	12
R,RE	L	10		15	17	20	25	30	35	40

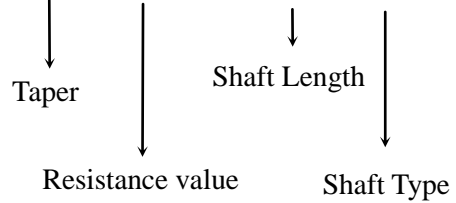


**17mm Metal Shaft Rotary Potentiometer - With Switch**

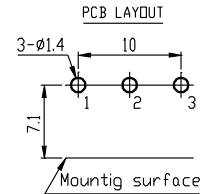
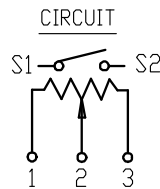
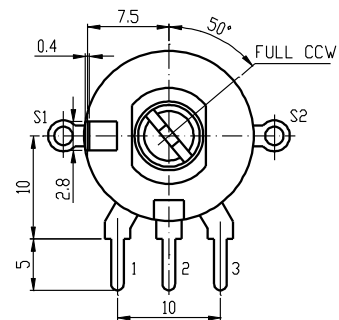
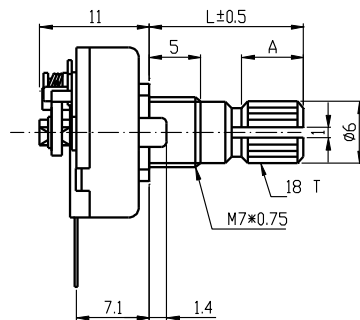
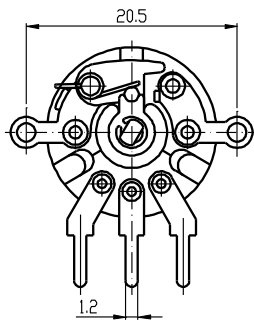


**Part Number**

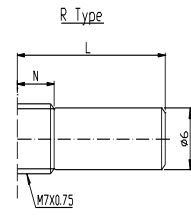
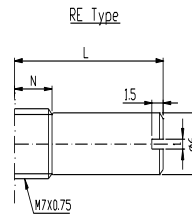
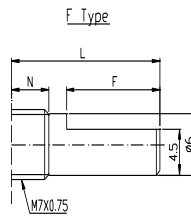
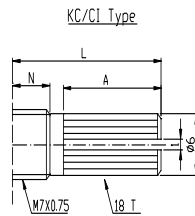
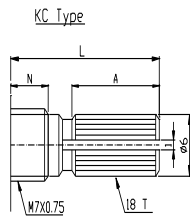
**17S3 – B 10K, L- 20 KC**



**Dimensions**



**Shaft Type**



		N=5mm									
Shaft Type	L	10	12	15	17	20	25	30	35	40	
KC	A	3.2		6	8	12	12	12	12	12	
	M	0.5		1	1	2	2	4	4	4	
KC/CI	A			8		13					
F	F	4	4	7	7	12	12	12	12	12	
R,RE	L	10		15	17	20	25	30	35	40	

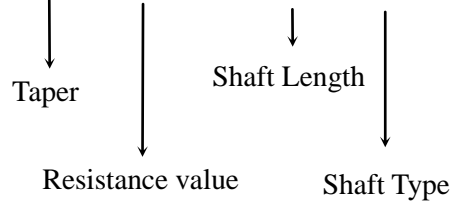


**17mm Metal Shaft Rotary Potentiometer - With Switch**

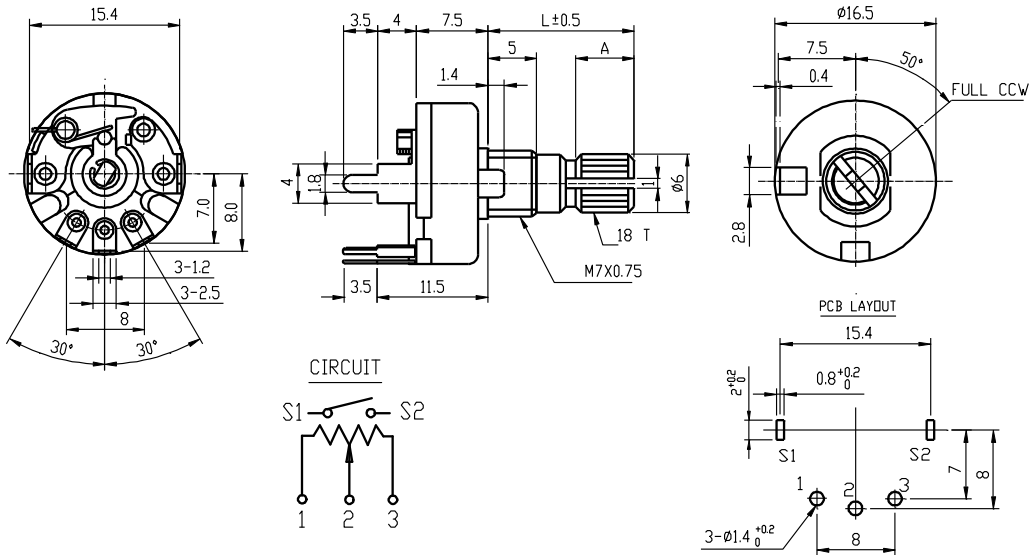


**Part Number**

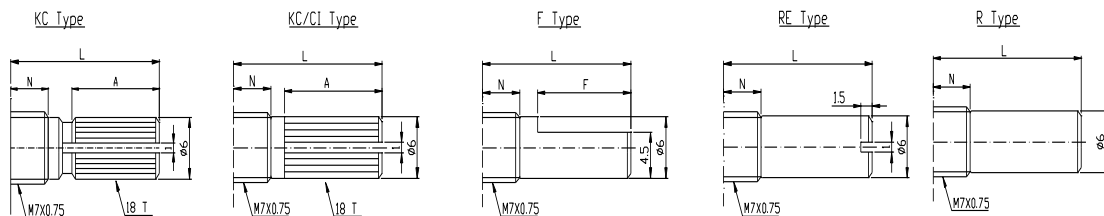
**17S4 – B 10K, L- 20 KC**



**Dimensions**



**Shaft Type**



		N=5mm									
Shaft Type	L	10	12	15	17	20	25	30	35	40	
KC	A	3.2		6	8	12	12	12	12	12	
	M	0.5		1	1	2	2	4	4	4	
KC/CI	A			8		13					
F	F	4	4	7	7	12	12	12	12	12	
R,RE	L	10		15	17	20	25	30	35	40	



**17mm Metal Shaft Rotary Potentiometer - With Switch**  
**17mm 金屬軸旋轉電位器 - 帶開關**



**Part Number**

**17S5 - B 10K, L- 20 KC**

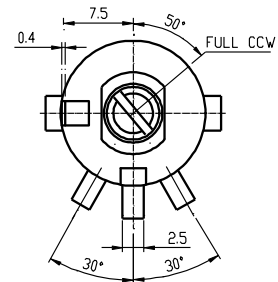
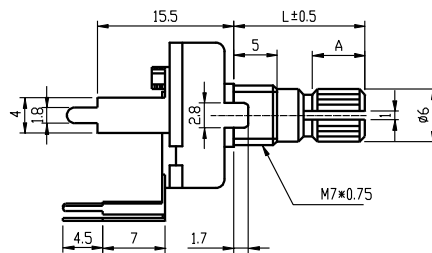
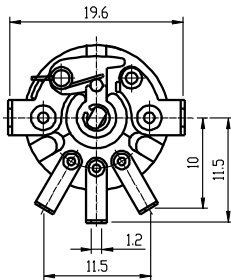
Taper  
線性

Shaft Length  
軸長

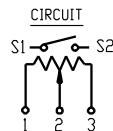
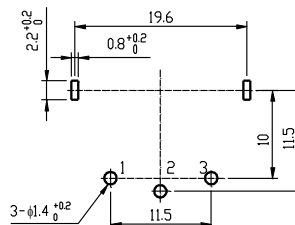
Resistance value  
阻值

Shaft Type  
軸型

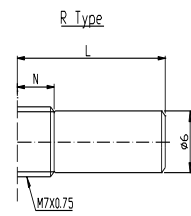
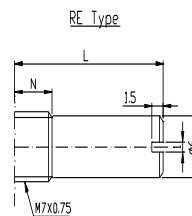
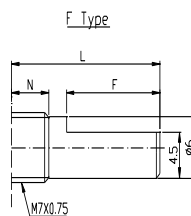
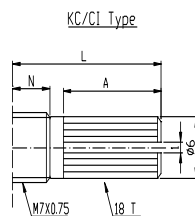
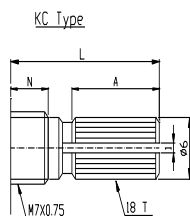
**Dimensions 規格尺寸**



PCB LAYOUT



**Shaft Type 軸型**



		N=5mm									
Shaft Type	L	10	12	15	17	20	25	30	35	40	
KC	A	3.2		6	8	12	12	12	12	12	
	M	0.5		1	1	2	2	4	4	4	
KC/CI	A			8		13					
F	F	4	4	7	7	12	12	12	12	12	
R,RE	L	10		15	17	20	25	30	35	40	

**17mm Metal Shaft Rotary Potentiometer - With Switch**  
**17mm 金屬軸旋轉電位器 - 帶開關****General 一般事項**

使用溫度範圍 Operating temperature	-10 °C ~ +70 °C
手工焊接 Manual soldering	300 °C Max 3sec

**Electrical Characteristics 電氣特性**

總阻值(R) Total resistance	100Ω~2MΩ
總阻值容許誤差 Resistance tolerance	±20% (more than 1MΩ ±30%)
阻值線性 Resistance taper	A B C W
摺動雜音 Sliding noise	Less than 47 mV
殘留阻值 Residual resistance	≤10 Ω Max
開關接觸電阻 Switch contact resistance	Lees than 50mΩ
絕緣阻抗 Insulation resistance	More than 100 MΩ at DC 500 V
定格電力 Rated power(W)	Linear (B) taper : 0.1 W Other taper : 0.05 W
開關定格電力 Switch rated power	0.5A at DC 12V
最高使用電壓 Max. Operating voltage	Linear (B) taper : 200 V Other taper : 150 V
耐電壓 Withstand voltage	1 Minute at AC 500 V

**Mechanical Characteristics 機械特性**

全回轉角度 Total rotational angle	260 °±10 °(開關角度 Switch angle: 40 °±5 °)
全回轉扭力 Rotational torque	30~200 gf.cm
開關扭力 Switch Action	70~350gf.cm
全回轉止強度 Rotational stopper strength	3 Kgf.cm Max
軸推拉強度 Shaft push-pull strength	8 Kgf.cm Max
迴轉壽命 Rotational life	15,000 Cycles (開關壽命 Switch life: 10,000 Cycles)