

9mm Metal Shaft Rotary Potentiometer

RK0952

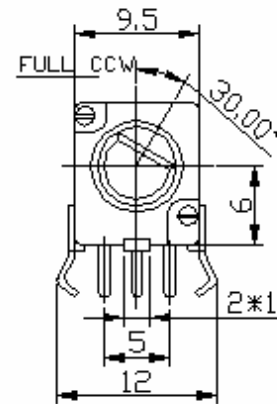
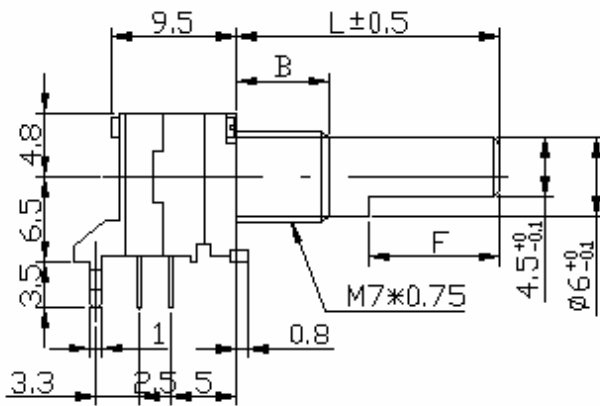


Part Number

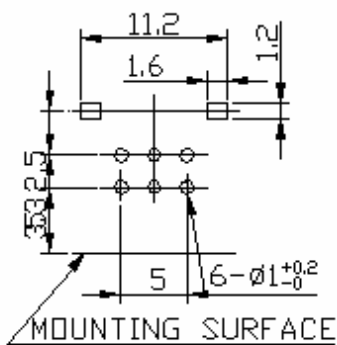
RK0952- B 50K, L - 20 KC

↓ Taper ↓ Resistance Value ↓ Shaft Type
 ↓ Shaft Length

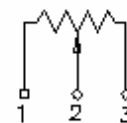
Dimensions



P.C.B LAYOUT



CIRCUIT



L	12.5	15	17.5	20	25
N	5	5	5	7	7
F	7	7	7	12	12

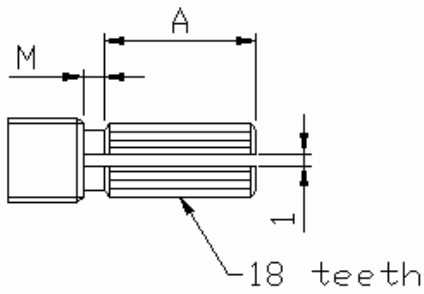
9mm Metal Shaft Rotary Potentiometer

Shaft Type

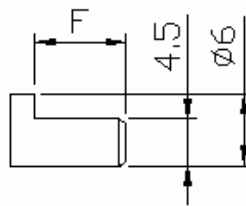
Bushing Length

N	5	7
---	---	---

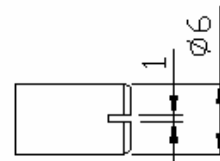
KC TYPE



F TYPE



RE TYPE



KC TYPE

N=5mm

L	12	15	20	25
A	3.5	7.5	12	12
M	0.5	1	2	2

F TYPE

N=5mm

L	15	20	25
F	7.5	12	12

RE TYPE

N=5mm

L	15	20	25
---	----	----	----

9mm Metal Shaft Rotary Potentiometer

Electrical Characteristics

Total Resistance	1K ~ 500K Ω				
Total Resistance Tolerance	$\pm 20\%$				
Resistance Tape	A. B. C. D. W. Taper				
Resistance Taper Characteristics	A50%	B50%	C50%	D50%	W50%
	15-25%	40-60%	75-85%	2-15%	45-55%
Rated Power	B Taper 0.05 W , Other Tapers 0.02 W				
Residual Resistance	$R \cong 250K\Omega \quad 0.1\%$				
	$250K\Omega > R > 10K\Omega \quad 20\Omega \text{Max. (between Term. 1, 2)}$				
	$10K\Omega \cong R \quad 20\Omega \text{Max. (between Term. 1, 2)}$				
Noise	Less than 100 mV				
Gang Error for stereo version	$0 \sim -40 \text{ dB} \cong 3\text{dB} \text{ (3dB Max.)}$				
Insulation Resistance	DC 250V 100M Ω				
Withstand Voltage	1 minute at AC 300V				
Switch Rating	DC 16V 1A				
Switch Contact Resistance	$\cong 50m \Omega$				
Sliding Life	15,000 Cycles				

Mechanical Characteristics

Total Rotational Angle	$300^\circ \pm 5^\circ$
Operating Force	20 ~ 200gf.cm
Stopper Strength	5 kgf.cm max.
Switch Working Force	$\cong 400 \text{ gf.cm}$
Switch Working Angle	$\cong 50^\circ$

Shaft Push-Pull Strength	10 kgf.cm Max.
Shaft Lever Wobble	0.6 x L/ 20 mm p-p max. (L: lever length both side)
Soldering Heat	300°C, 3sec. (Only for Hand-Soldering)