



11mm Snap-in Insulated Potentiometers

RK1106G

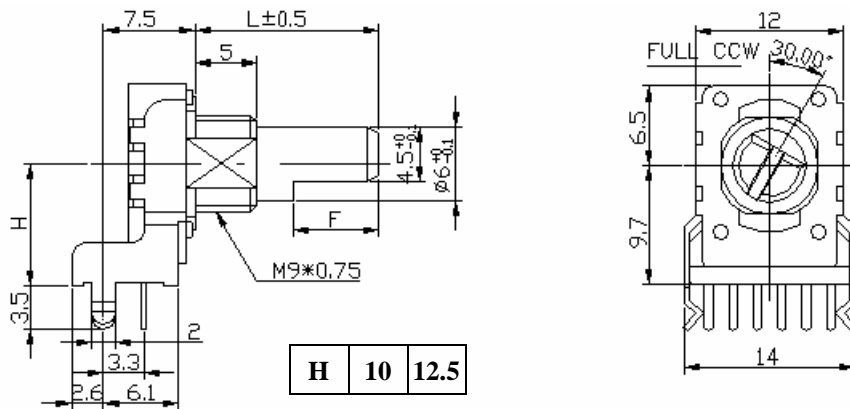


Part Number

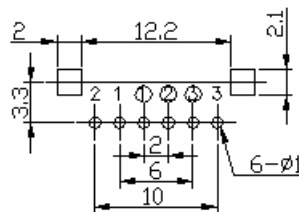
RK1106G - B 50K, L - 20 F

↓ ↓ ↓ ↓
 Taper Resistance Value Shaft Length Shaft Type

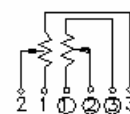
Dimensions



P.C.B LAYOUT

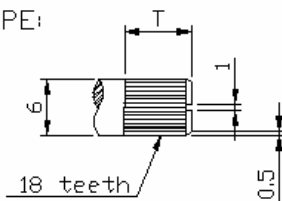


CIRCUIT

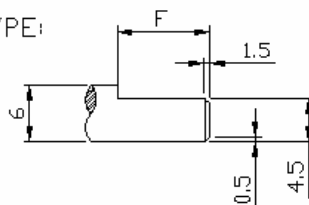


Shaft Type

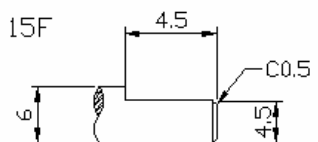
KT TYPE:



F TYPE:



ONLY 15F



KC TYPE

L	25KC	30KC	35KC
T	12	12	12

F TYPE

L	15	20	22.5	25	27.5	30	32.5	35	37.5
F	4.5	7	7	12	12	12	12	12	12

11mm Snap-in Insulated Potentiometers

RK1107G

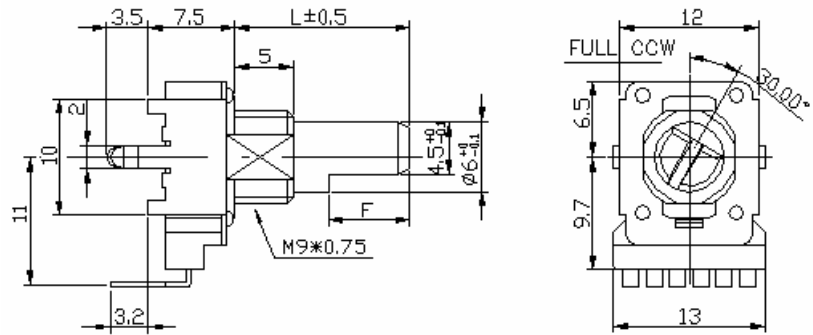


Part Number

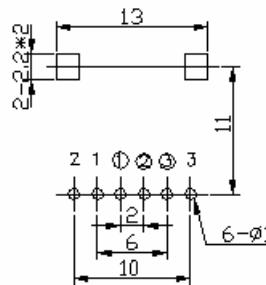
RK1107G - B 50K, L - 20 F

↓ Taper ↓ Resistance Value ↓ Shaft Type
 ↓ Shaft Length

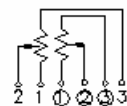
Dimensions



P.C.B LAYOUT

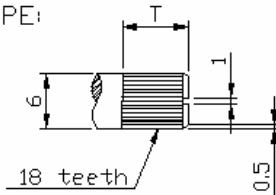


CIRCUIT

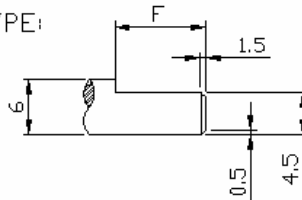


Shaft Type

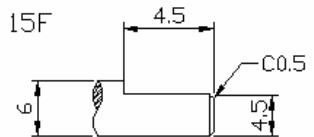
KT TYPE:



F TYPE:



ONLY 15F



KC TYPE

L	25KC	30KC	35KC
T	12	12	12

F TYPE

L	15	20	22.5	25	27.5	30	32.5	35	37.5
F	4.5	7	7	12	12	12	12	12	12

11mm Snap-in Insulated Potentiometers

RK1108G

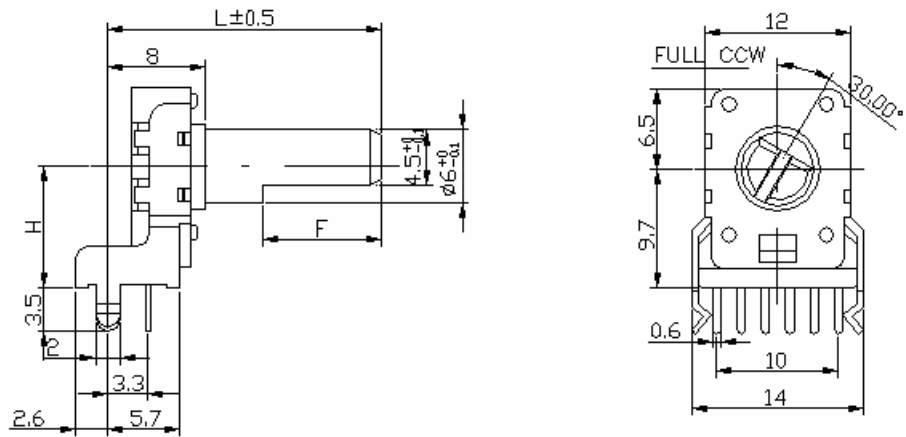


Part Number

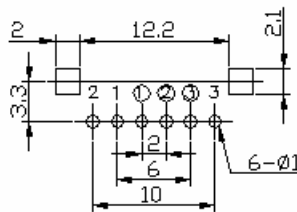
RK1108G - B 50K, L - 20 F

↓ Taper ↓ Resistance Value ↓ Shaft Type
 ↓ Shaft Length

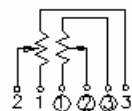
Dimensions



P.C.B LAYOUT

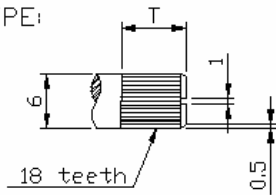


CIRCUIT

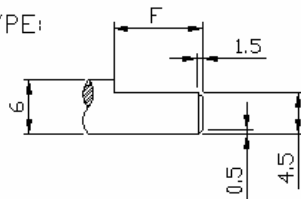


Shaft Types

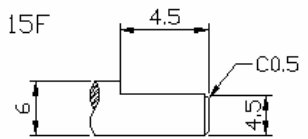
KT TYPE:



F TYPE:



ONLY 15F



KC TYPE

L	25KC	30KC	35KC
T	12	12	12

F TYPE

L	15	20	22.5	25	27.5	30	32.5	35	37.5
F	4.5	7	7	12	12	12	12	12	12

11mm Snap-in Insulated Potentiometers

RK1109G

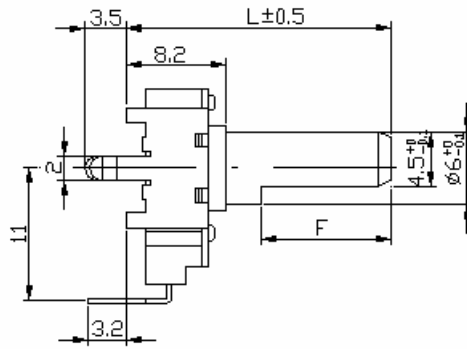


Part Number

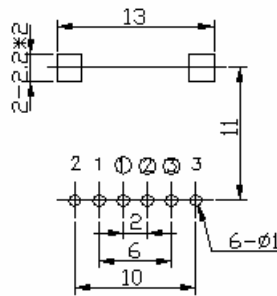
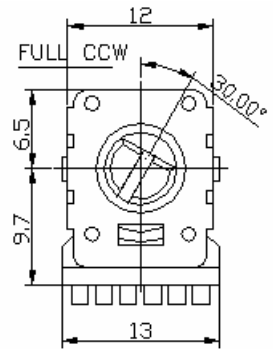
RK1109G - B 50K, L - 20 F

↓ ↓ ↓ ↓
 Taper Resistance Value Shaft Length Shaft Type

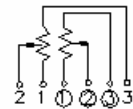
Dimensions



P.C.B LAYOUT

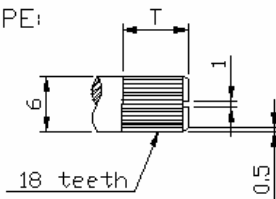


CIRCUIT

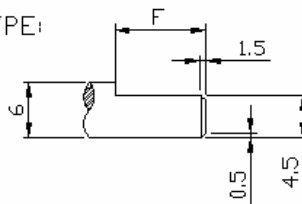


Shaft Type

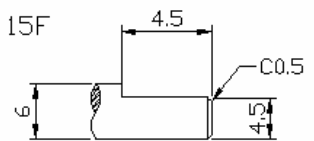
KT TYPE:



F TYPE:



ONLY 15F



KC TYPE

L	25KC	30KC	35KC
T	12	12	12

F TYPE

L	15	20	22.5	25	27.5	30	32.5	35	37.5
F	4.5	7	7	12	12	12	12	12	12

11mm Snap-in Insulated Potentiometers

Electrical Characteristics

Total Resistance	5K Ω ~ 500K Ω				
Total Resistance Tolerance	$\pm 20\%$				
Resistance Taper	A. B. C. D. W Taper				
Resistance Taper Characteristics	A50%	B50%	C50%	D50%	W50%
	15-25%	40-60%	75-85%	2-15%	45-55%
Rated Power	0.05 W				
Residual Resistance	R \geq 250K Ω 0.1%				
	250K Ω > R > 10K Ω 20 Ω Max. (between Term. 1, 2)				
	10K Ω \geq R		20 Ω Max. (between Term. 1, 2)		
Gang error	2 db \hat{a}				
Noise	100 mV Max.				
Max. Operating Voltage	AC 30V				
Insulation Resistance	DC 250V 100M Ω Min.				
Withstand Voltage	1 minute at AC 300V Min.				
Rotational Lift	15,000 Cycles Min.				

Mechanical Characteristics

Total Rotational Angle	300° \pm 5°
Stopper Strength	6kgf.cm max./ 3 sec.
Rotational Torque	30 ~ 200gf.cm
Shaft Push-Pull Strength	8kgf.cm max./ 3 sec.
Shaft Lever Wobble	0.7xL/30mmp-p max.
Center Click Torque	150 ~ 350 g.cm
Shaft Bending	0.3mm max.
Soldering Heat	300°C, 3sec. (Only for Hand Soldering)
Remark	§ Insulated shaft of black.