



**14mm Snap-in Insulated Potentiometers**

**RK1411G**

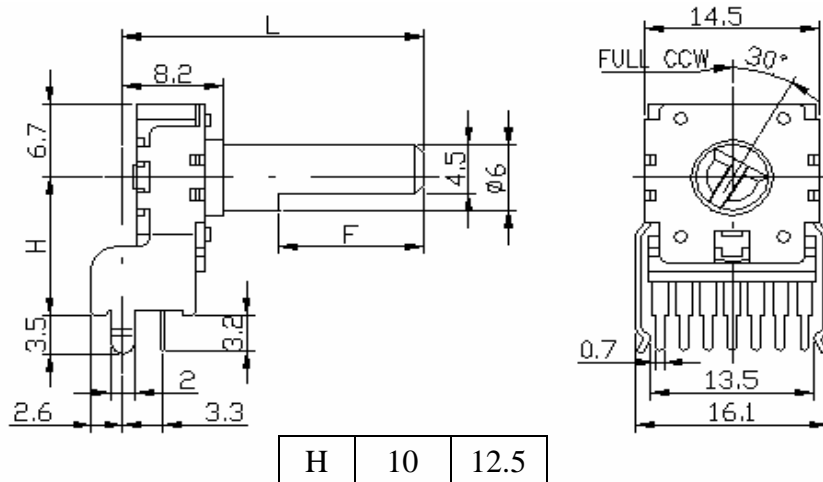


**Part Number**

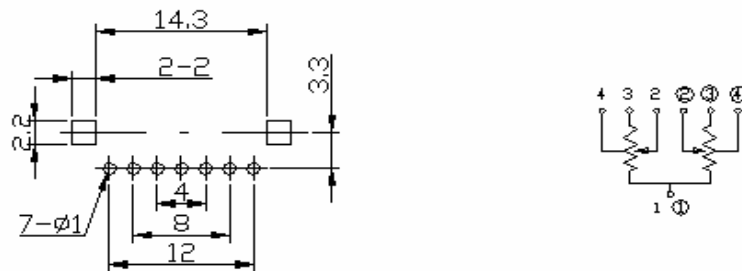
**RK1411G - B 50K, L - 20 F**

↓ Taper    ↓ Resistance Value    ↓ Shaft Length    ↓ Shaft Type

**Dimensions**



**P.C.B LAYOUT**



**Shaft Type**



**F TYPE**

L	15	20	22.5	25	27.5	30	32.5	35	37.5
F	4.5	7	7	12	12	12	12	12	12



# 14mm Snap-in Insulated Potentiometers

## RK1413G

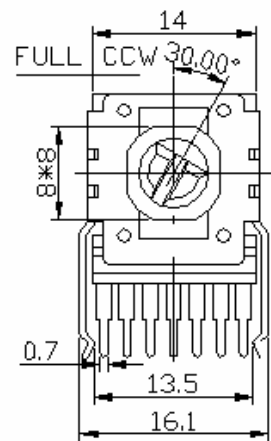
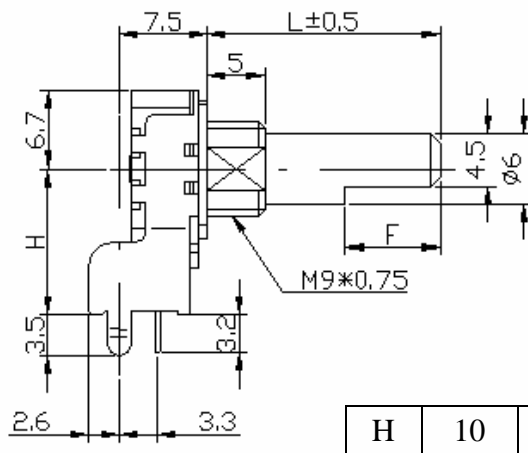


### Part Number

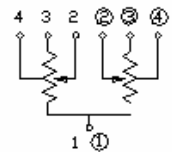
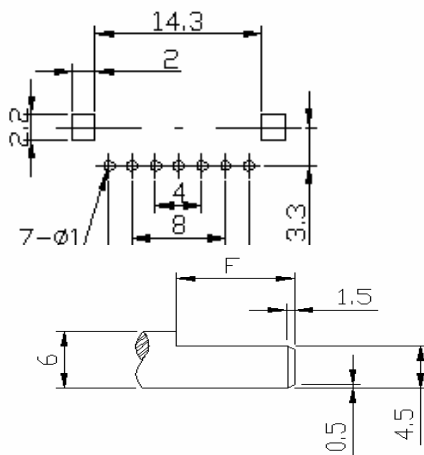
**RK1413G - B 50K, L - 20 F**

↓ Taper      ↓ Resistance Value      ↓ Shaft Length  
 ↓ Shaft Type

### Dimensions



### Shaft Type



L	12.5	15	17.5	20	22.5	25	27.5	30
F	7	7	12	12	12	12	12	12



# 14mm Snap-in Insulated Potentiometers

## Electrical Characteristics

Total Resistance	5K $\Omega$ ~ 500K $\Omega$				
Total Resistance Tolerance	$\pm 20\%$				
Resistance Taper	A. B. C. D. W Taper				
Resistance Taper Characteristics	A50%	B50%	C50%	D50%	W50%
	15-25%	40-60%	75-85%	2-15%	45-55%
Rated Power	0.05 W				
Residual Resistance	R $\geq$ 250K $\Omega$ 0.1%				
	250K $\Omega$ > R > 10K $\Omega$ 20 $\Omega$ Max. ( between Term. 1, 2)				
	10K $\Omega$ $\geq$ R		20 $\Omega$ Max. ( between Term. 1, 2)		
Gang error	-40 ~ 0dB $\leq$ 3 db				
Noise	100 mV Max.				
Max. Operating Voltage	AC 50V				
Insulation Resistance	DC 250V 100M $\Omega$ Min.				
Withstand Voltage	1 minute at AC 300V Min.				
Rotational Lift	10,000 Cycles Min.				

## Mechanical Characteristics

Total Rotational Angle	300° $\pm$ 5°
Stopper Strength	6kgf.cm max./ 3 sec.
Rotational Torque	30 ~ 200gf.cm
Shaft Push-Pull Strength	8kgf.cm max./ 3 sec.
Shaft Lever Wobble	0.7xL/20mmp-p max.
Center Click Torque	150 ~ 300 g.cm
Shaft Bending	0.3mm max.
Remark	§ Insulated shaft of black.