



SONG HUEI ELECTRIC CO.,LTD

Rotary Switch (Band Switch)

SRBP25-1

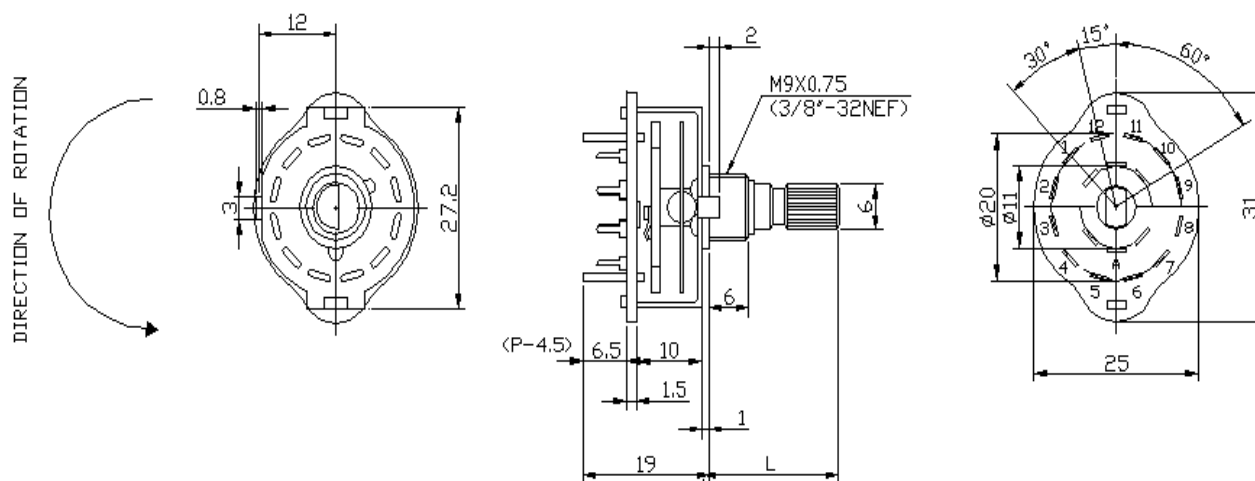


Part Number

SRBP25 - 1 - 2 - 4 20 KC

Section Pole Position
 Shape of Shaft
 Length of Shaft

Dimensions



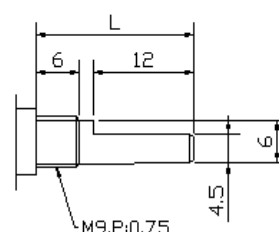
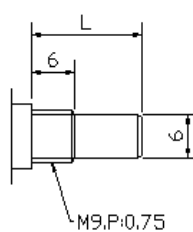
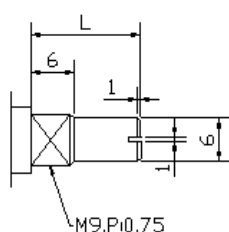
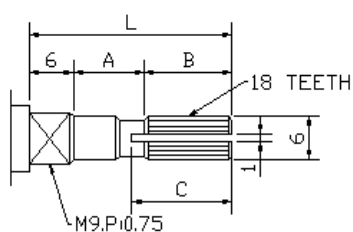
Shaft Type

KC TYPE

RE TYPE

R TYPE

F TYPE



L	15	20	25	30
A	3	4	7	12
B	6	10	12	12
C	7	11	14	14

Rotary Switch (Band Switch)

POWER RATING

DC 30 V. 0.3 A

CONSTRUCTION

- (1.) SHAPE AND DIMENSIONS SUBJECT TO ATTACHED CHART REGULATION.
- (2.) EVERY PART SHOULD BE FINISHED NOT TO EXIST RUST, FLAW, CRACK AND BAD PLATING.

MECHANICAL SPECIFICATION

- (3.) ROTATION TORQUE : 3 kgf.cm.
- (4.) STOPPER STRENGTH : 5kgf.cm FOR 1 MINUTE °
- (5.) TERMINAL STRENGTH : WHEN 400 gf ARE WEIGHTED ON TOP OF TERMINAL IN EVERY DIRECTION FOR ONE MINUTE, LOOSE STALE OF TERMINAL AND DAMAGE ON STATOR BOARD SHOULD NOT EXIST.
- (6.) CHANGE OF SWITCHING TENSION: +/- 30 gf

ELECTRIC SPECIFICATION

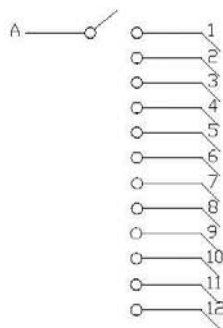
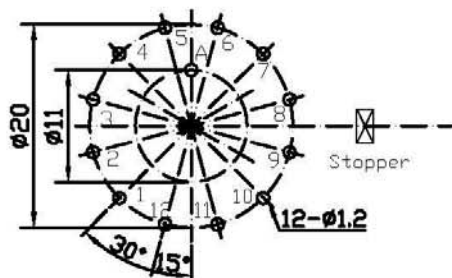
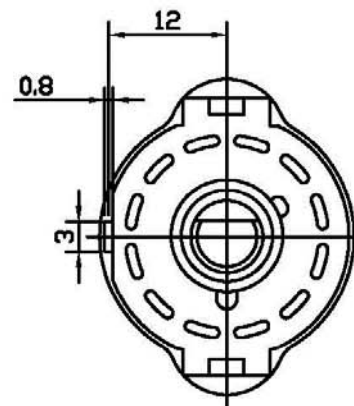
- (7.) CONTACT RESISTANCE : LESS THAN 20 m Ω . ON DC 5 V. 1A MEASURED BY VOLTAGE DECREASING METHOD OR MEASURED BY 1 KHZ LESS THAN 2 MV.
- (8.) INSULATION RESISTANCE : MORE THAN 100 m Ω .ON DC 500V MEASURED BY INSULATION TESTER.
- (9.) WITHSTAND VOLTAGE : AC 500 V. 50~60 Hz. FOR 1 MINUTE.

TEMPERATURE RANGE

-20 ~ +60°C

LIFE TEST

- (1.) SPEED OF TESTING MACHINE: 19 1/MIN.
- (2.) SWITCHING: 10,000 CYCLES.
- (3.) CONTACT RESISTANCE: LESS THAN 40 M Ω .

[illegible]

F.K. Industrievertretungen Kobler
Tel. +49(0)7428-917310 e-mail:info@fk-industrie.de

規格型號:RBP25-1-1-12(F)

核 准:	審 核:	製 圖:	單 位	mm	比 例	1:1				
			版 本	1.0	製圖日期	2010.11.04	項 目	修 正 內 容	修正人	日 期
			編 號		第三角法		修 正 記 事			